

# Progress in the implementation of national Geospatial Data Infrastructure in the Americas

## Working Group SDI

Macarena Pérez García



UN-GGIM

United Nations Committee of Experts on  
Global Geospatial Information Management

[ggim.un.org](http://ggim.un.org)

# OBJETIVES 2019

**B. Design evaluation and monitoring tool regarding the progress status of the Regional SDI**



**C. Disseminate regional initiatives and good practices in the area of IDES, generating a basic guideline document regarding the operation of SDI**

OBJETIVES	RESULTS	TIME LINE
Regional diagnostic survey of initiatives in terms of use, standards and other elements associated with the use of IDES in the region.	<ul style="list-style-type: none"> <li>*Report</li> <li>*Dashboard</li> </ul>	Marzo 2019- Junio 2019
Systematization of information. Web documentation repository	<ul style="list-style-type: none"> <li>• Matrix of information (related with 2018-2019 survey)</li> </ul> <ul style="list-style-type: none"> <li>* Web documentation repository</li> </ul>	<p>Julio 2019- Diciembre 2019</p> <p>Julio 2019- Diciembre 2019</p>



# Design evaluation and monitoring tool regarding the progress status of the Regional SDI

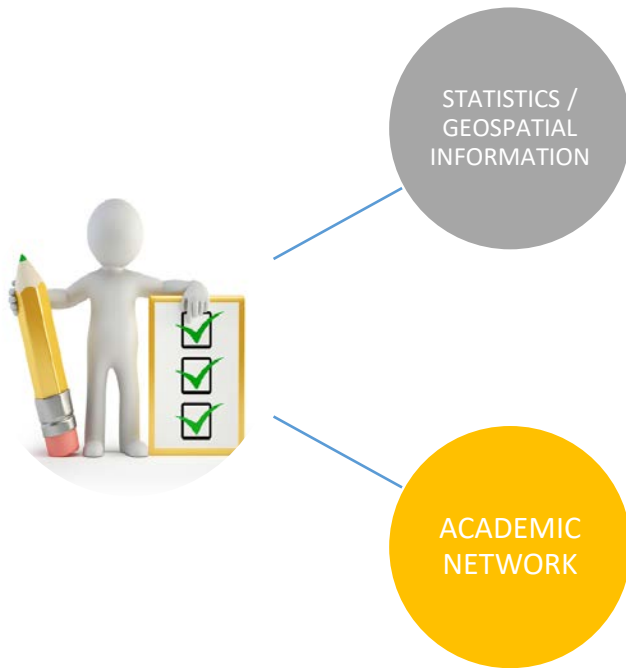


UN-GGIM

United Nations Committee of Experts on  
Global Geospatial Information Management

[ggim.un.org](http://ggim.un.org)

# Structure of the survey 2019



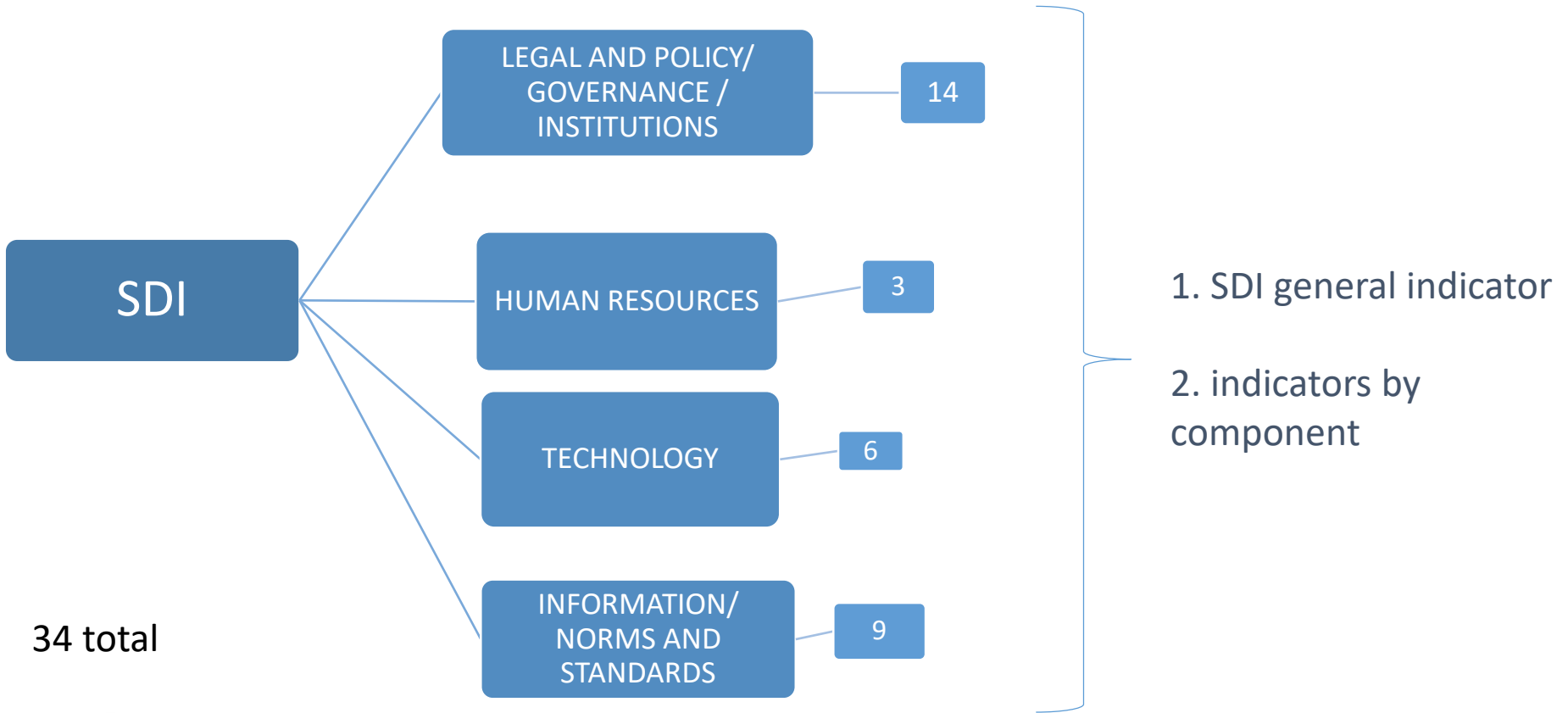
- Instrument design (2018)
- Applied during the months of May to June 2019.
- 27 countries responded.



**Examples**

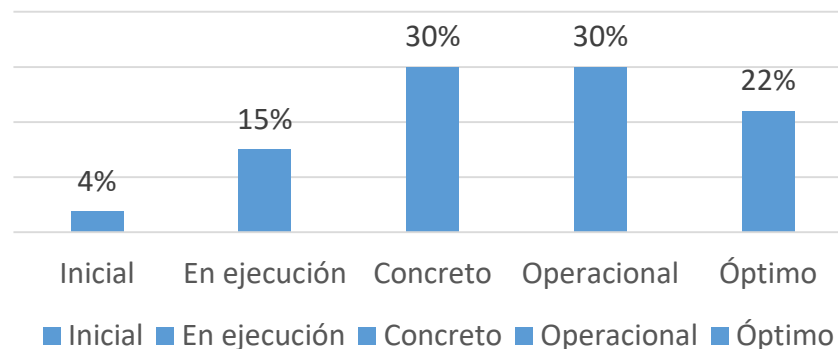
How many digital data is available for viewing on the platform of the Geospatial Data Infrastructure in your country?

# Structure of the survey Components



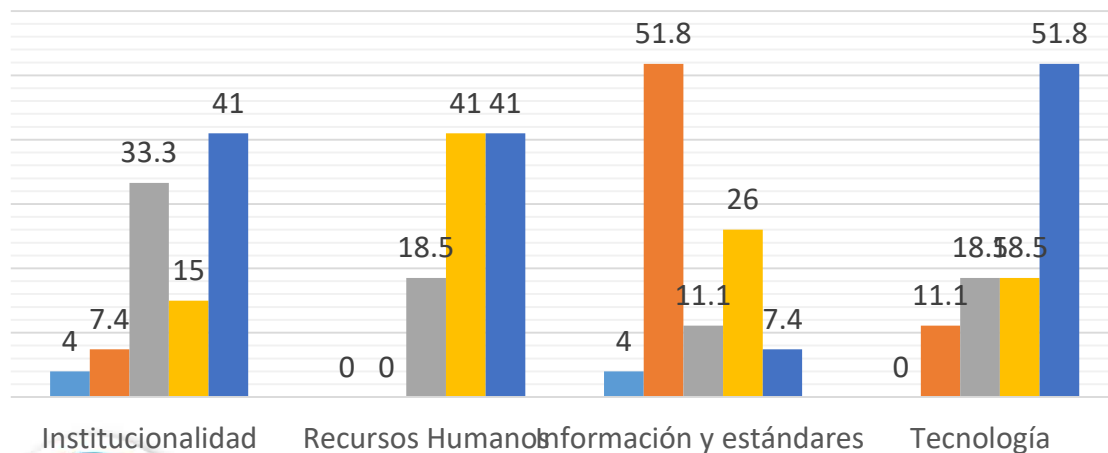
# General Results Survey 2019

## SDI Implementation level 2019



Porcentajes de estado de implementación a partir de categorías  
Indicador IDE 2019

■ Inicial ■ En ejecución ■ Concreto ■ Operacional ■ Óptimo





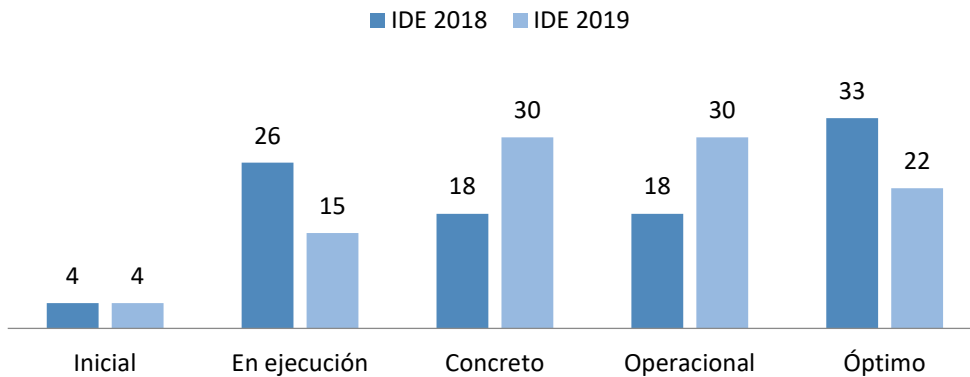
UN-GGIM

United Nations Committee of Experts on  
Global Geospatial Information Management

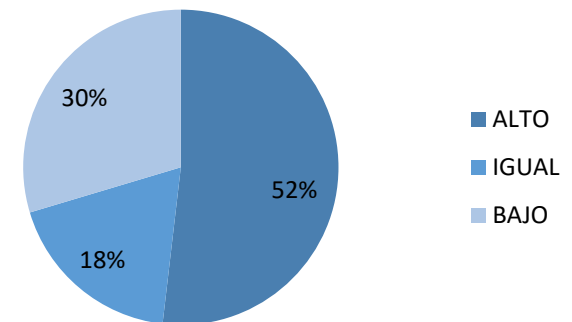
[ggim.un.org](http://ggim.un.org)

# Comparative analysis of general results: regional IDE indicators years 2018-2019

Estado comparativo indicador IDE en porcentajes año 2018-2019



Variabilidad indicador IDE regional años 2018 - 2019



Total de países que responden ambas encuestas	SUBE / HIGH	IGUAL / EQUAL	BAJA / LOW
27 (100%)	14 (52%)	5 (18%)	8 (30%)
KPI	Presentación positiva 70%		Presentación negativa 30%

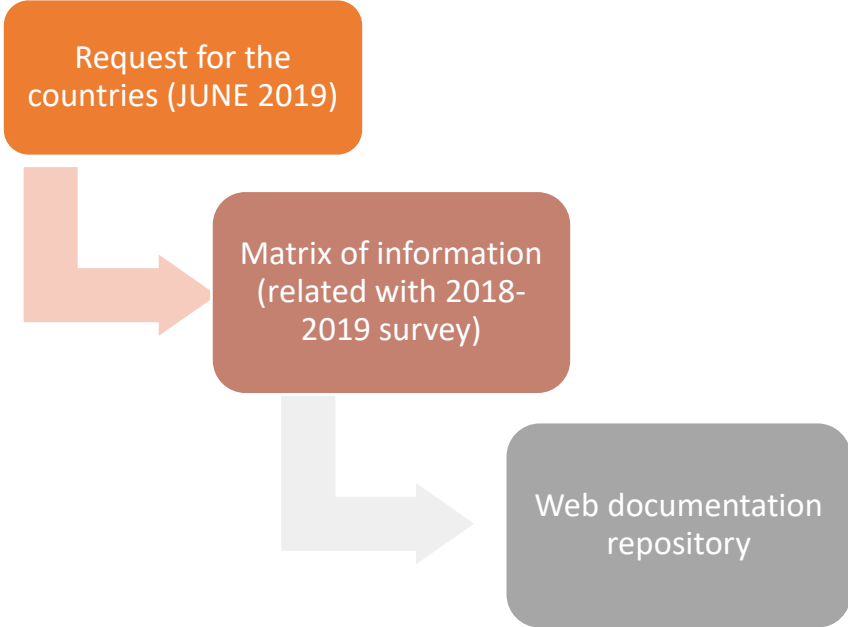






# Disseminate regional initiatives and good practices in the area of SDI

4 Countries / Survey





# UN-GGIM:Americas

REGIONAL COMMITTEE OF  
UNITED NATIONS  
ON GLOBAL GEOSPATIAL  
INFORMATION MANAGEMENT  
FOR THE AMERICAS



UN-GGIM

United Nations Committee of Experts on  
Global Geospatial Information Management

[ggim.un.org](http://ggim.un.org)