

GESTIÓN DEL RIESGO DE DESASTRES

DISASTER RISK MANAGEMENT



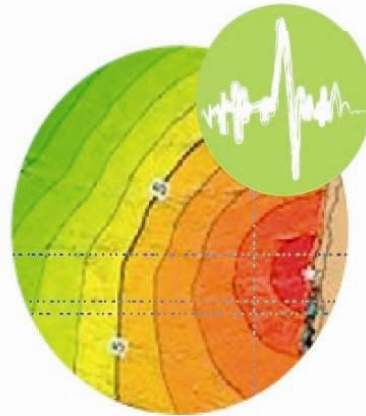
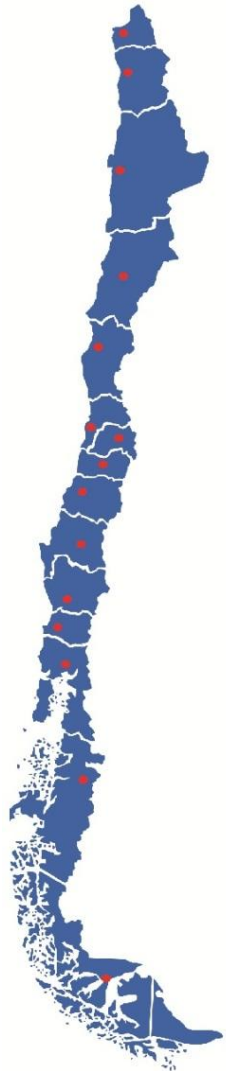
ONEMI

Ministerio del Interior
y Seguridad Pública

Gobierno de Chile

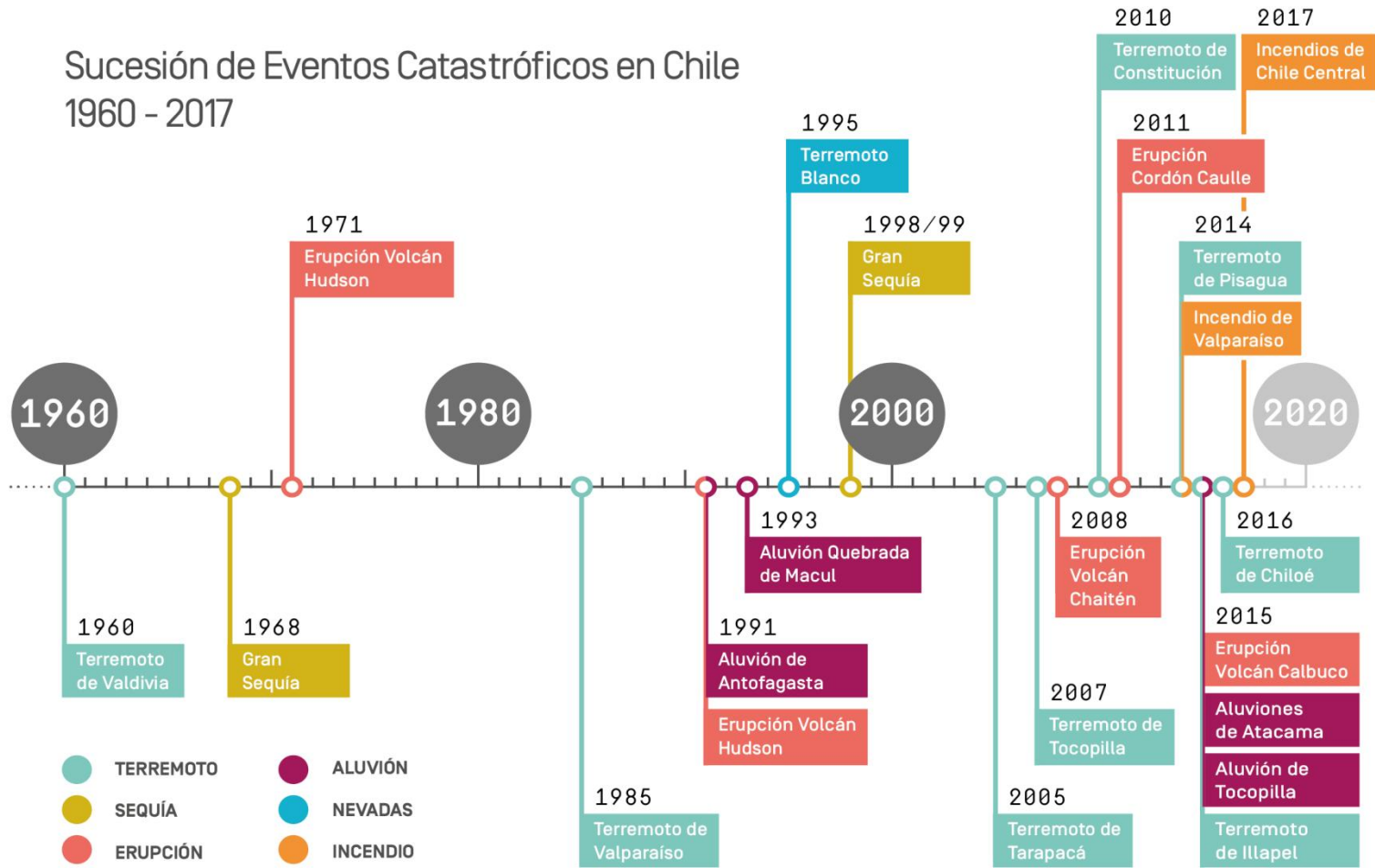
Oficina Nacional de Emergencia del Ministerio del
Interior y Seguridad Pública,
Abril, 2017

CONTEXTO NACIONAL / NATIONAL CONTEXT



CATÁSTROFES EN CHILE / DISASTERS IN CHILE

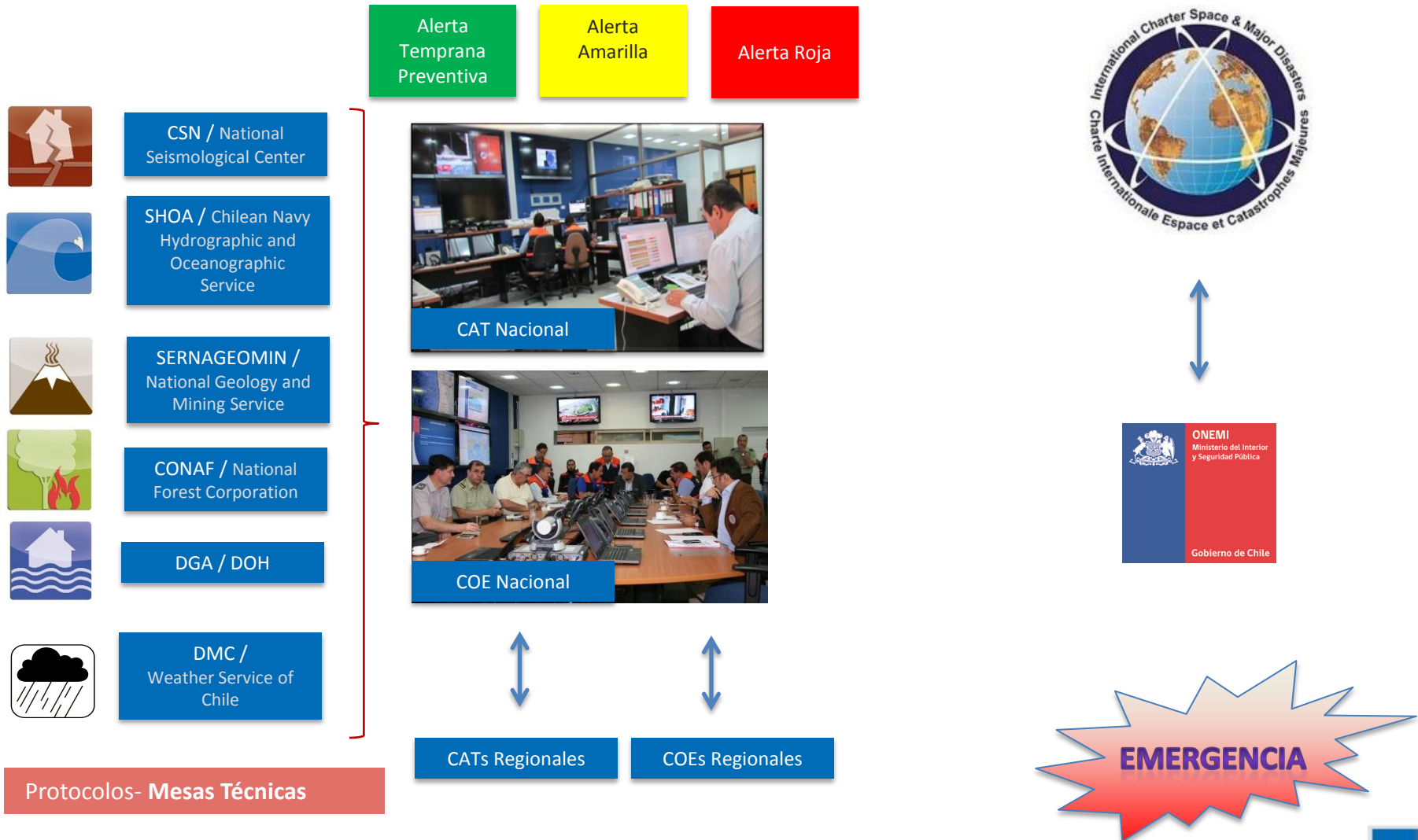
Sucesión de Eventos Catastróficos en Chile 1960 - 2017



CIGIDEN, 2017

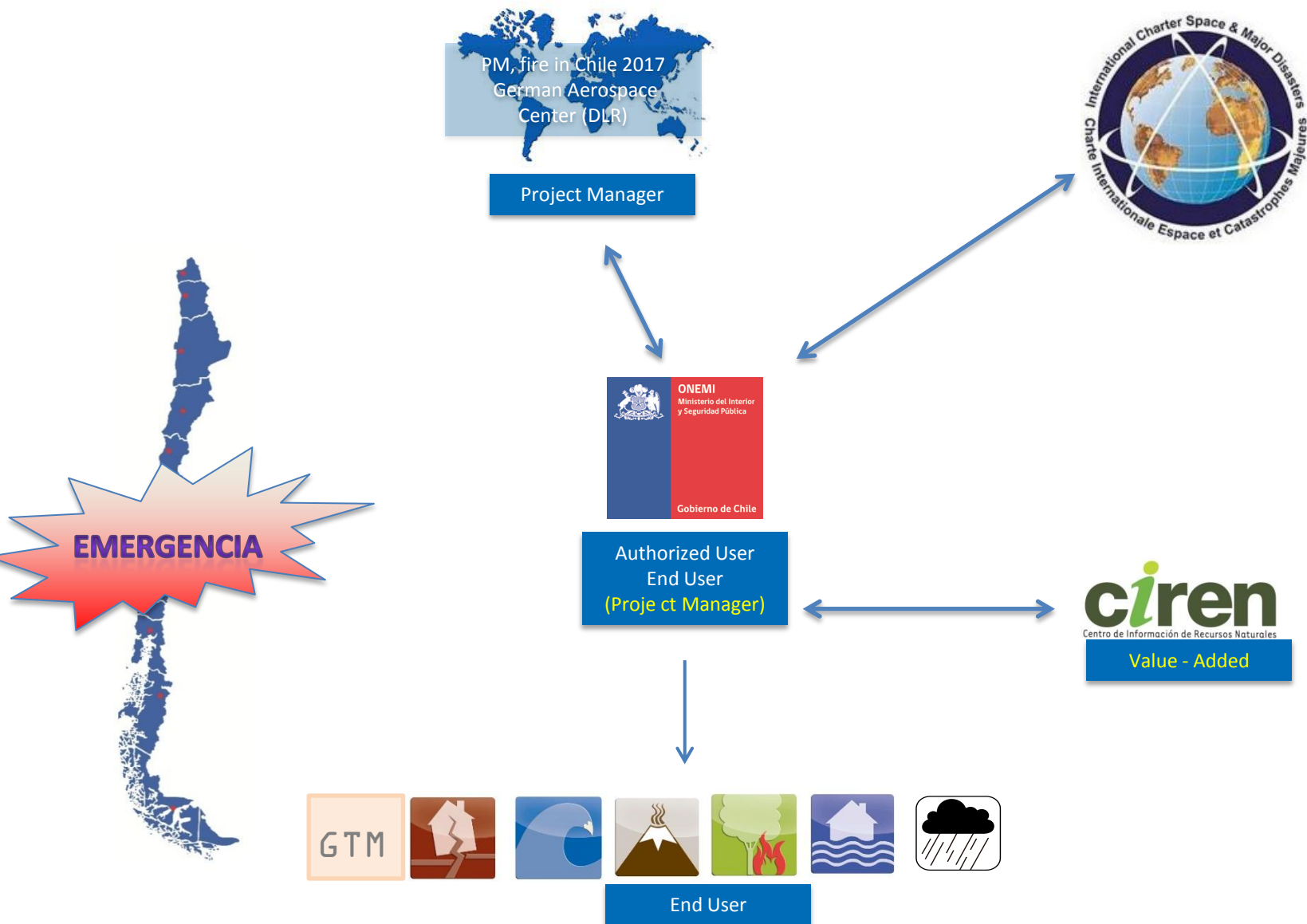
Centro Nacional de Alerta Temprana / National Early Warning Center

Monitoreo - Alerta - Alarma – Respuesta / Monitoring – warning - Response



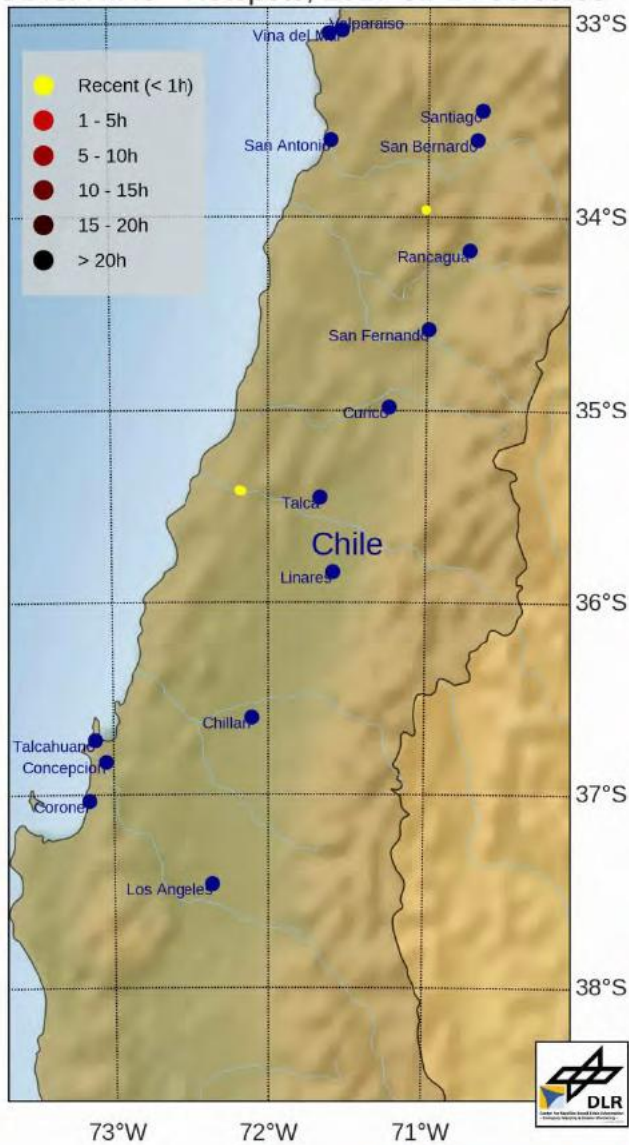
Protocolos- Mesas Técnicas

CHARTER



Daily fire Hotspots (Jan 14-29)

MODIS/VIIRS - Hotspots, 2017-01-14 05:05:00



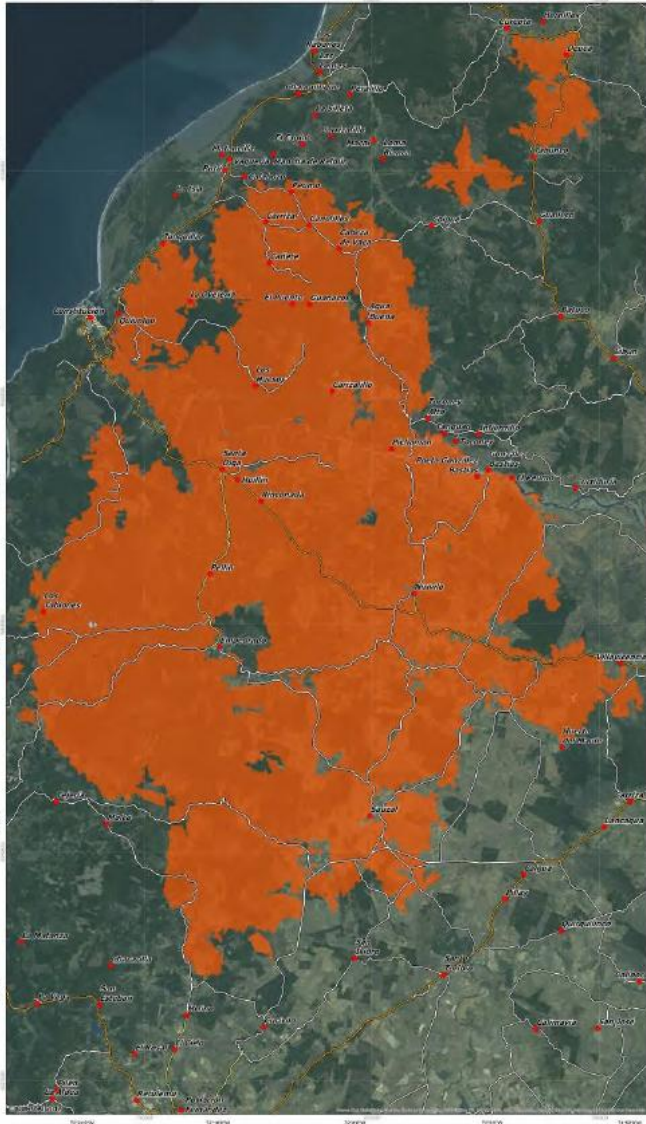
Final delineation of burnt areas (5th Feb.) = 313,000 hectares



CHILE - Las Máquinas
Fires as of February 05, 2017 - Disaster Extent Map

1:125,000

Chart: GCS 1989
Product No. 12
Version No. 01



Legend

- Burn area
- Suburbia
- Town Village
- Primary road
- Secondary road
- Feeder road

Interpretation

On January 04, 2017, the International Charter 'Space and Major Disasters' was activated for the first time in Chile. This time began in the midst of a city ravaged with record temperatures reaching 39°C. A small, remote, isolated and largely uninhabited town, the former capital of Curanipe, is a town of approximately 1000 people located in an area of high fire risk. Since 2010, the region has experienced several forest fires.

The map shows the burnt area (02/05/2017) in the Las Máquinas area that was semi-automatically derived from DMSP imagery acquired on February 02, 2017, and 02/05, 2017, and is used as baseline.

Cartographic Information

Local projection: UTM Zone 18 S, Datum: WGS 1984
Geographic projection: UTM, Datum: WGS 1984
Scale: 1:125,000 to A1 (DIN)

Data Sources

DMSP (2017) © DMSP 2017, Disaster DMSP, A1
10m Resolution
SRTM, SRTM30, © Esri/Airphoto/GeoEye/USGS, 2017

Framework

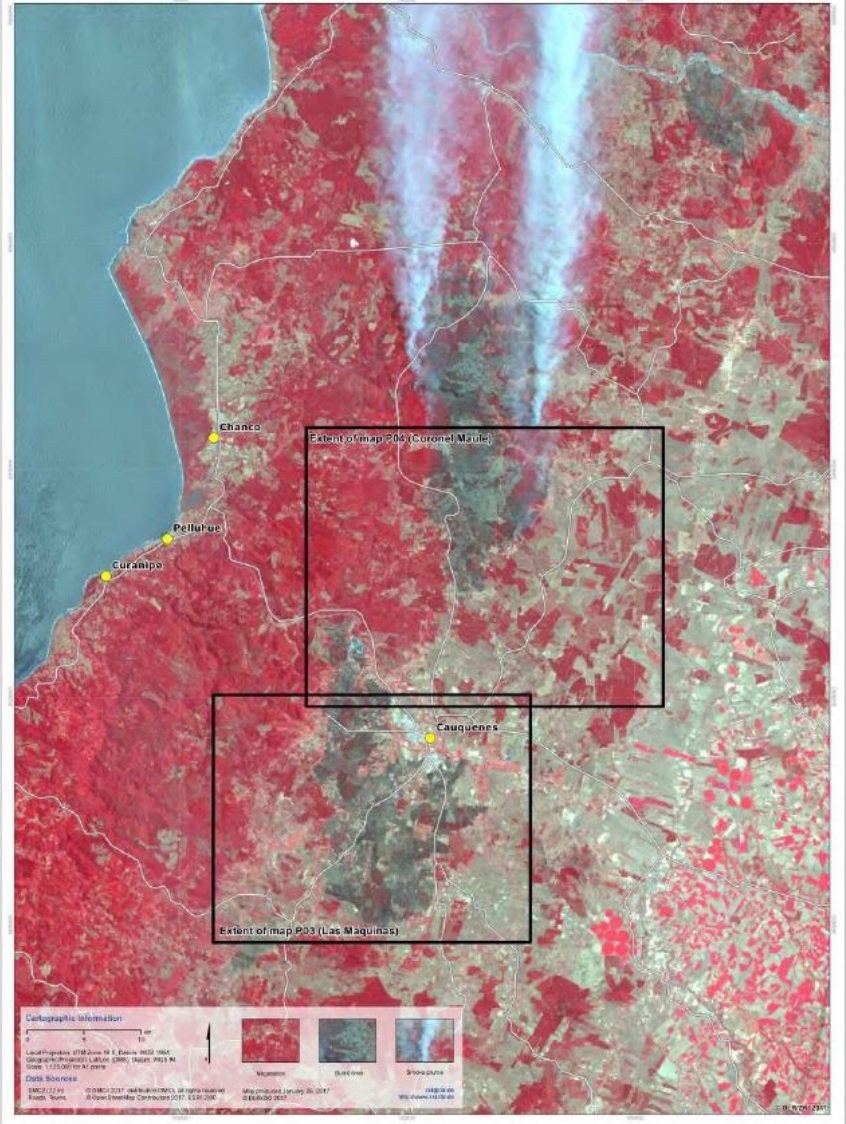
The present information is being widely and rapidly disseminated to the public, with a view to providing help and relief to the affected population.

All errors, omissions and inaccuracies are the sole responsibility of the user. The user should verify the content of the present information before using it.

Map produced February 10, 2017 by ZKI
© DUNDI 2017



CHILE - Cauquenes Province
Fire situation as of January 23, 2017 - Satellite Image - 1:125,000



Cartographic Information

Local projection: UTM Zone 18 S, Datum: WGS 1984
Geographic projection: UTM, Datum: WGS 1984
Scale: 1:125,000 to A1 (DIN)

Data Sources

DMSP (2017) © DMSP 2017, Disaster DMSP, A1
10m Resolution
SRTM, SRTM30, © Esri/Airphoto/GeoEye/USGS, 2017

Map produced January 20, 2017
© DUNDI 2017

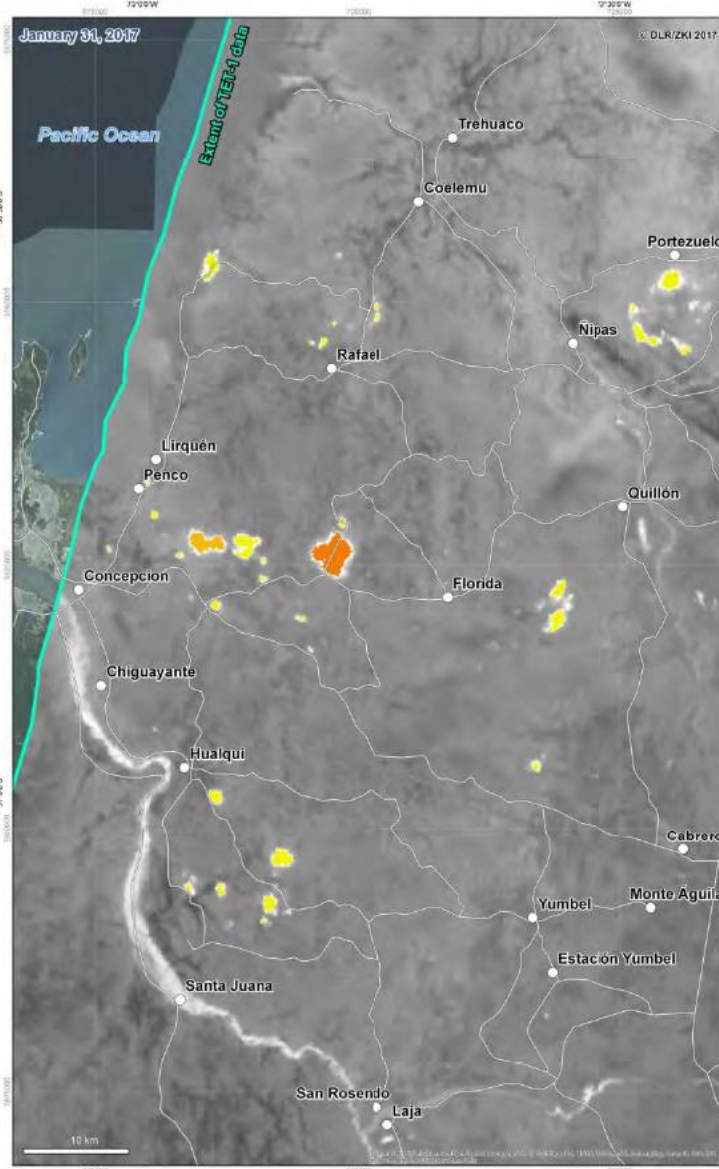
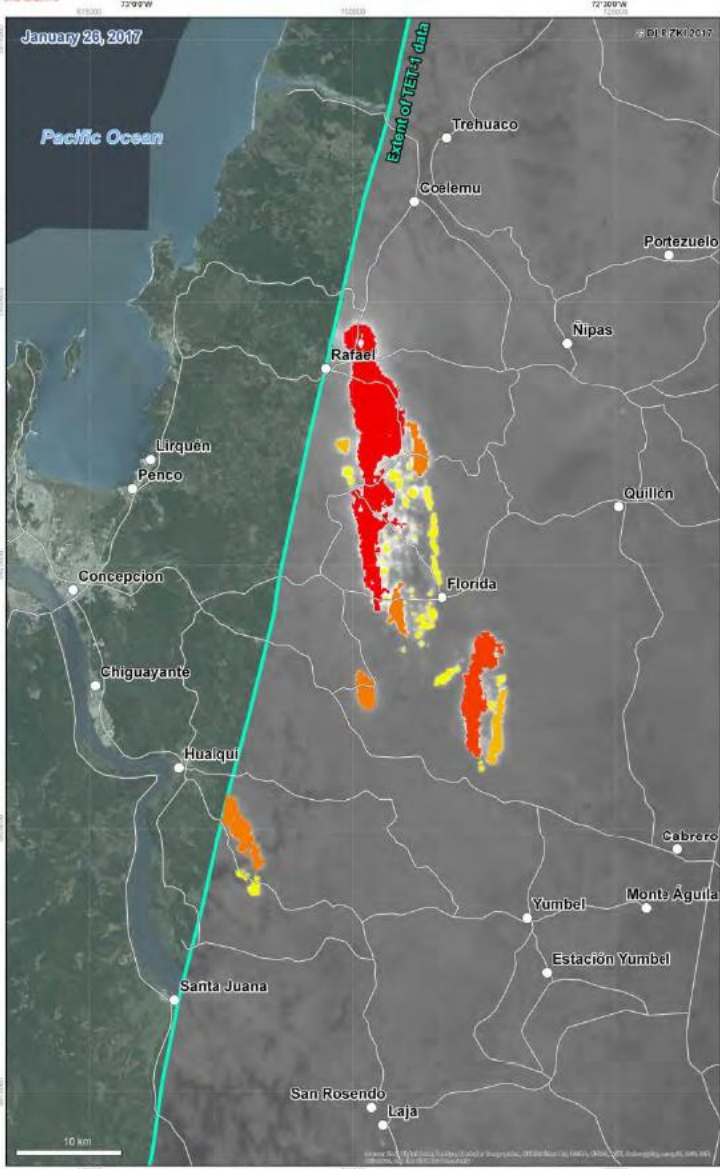


CHILE - Concepcion

Fires as of January 26 and 31, 2017 - Situation Map

1:200,000

Product No. 13
Version No. 01



Legend



Interpretation

The map shows fire hot spots around the city of Concepcion, Chile, derived from FireBIRD/TET-1 data which were acquired on January 26 and 31, 2017.

The coloured regions represent the fire areas whereas the colour shades indicate fire intensity. A commonly used measure of fire intensity is the fire radiative power (FRP). The FRP is a useful parameter for characterizing the amount of burnt vegetation and, the corresponding amount of gas and aerosol emissions. FRP varies to the rate of fuel combustion, and if available in near real time, may be useful for fire fighting, since the FRP per fire front unit – the front radiative intensity – can inform on the frontal fire intensity relative to the often quoted fire line intensity parameter.

FRP can be estimated from FireBird data using a number of methods. In difference to MODIS which uses only the MWR band, FireBird uses the MWR and the LWIR band getting with this more detail information compared to MODIS.

Cartographic Information

Local projection: UTM Zone 18 S, Datum: WGS 1984
Geographic projection: Lat/Lon (DMS), Datum: WGS 84
Scale: 1:200,000 for A1 prints.

Data Sources

FireBIRD/TET-1 (150 m) © DLR 2017
Cities, Roads © OpenStreetMap Contributors 2017

Framework

The products elaborated for this mapping activity are realized to the best of our ability, optimizing the material available. All geographic information has limitations due to the scale, resolution, date and interpretation of the original source materials. No liability concerning the content or the use thereof is assumed by the producer.

Map produced January 31, 2017 by ZKI
© DLR/ZKI 2017

zhg@dlr.de
http://www.zki.dlr.de

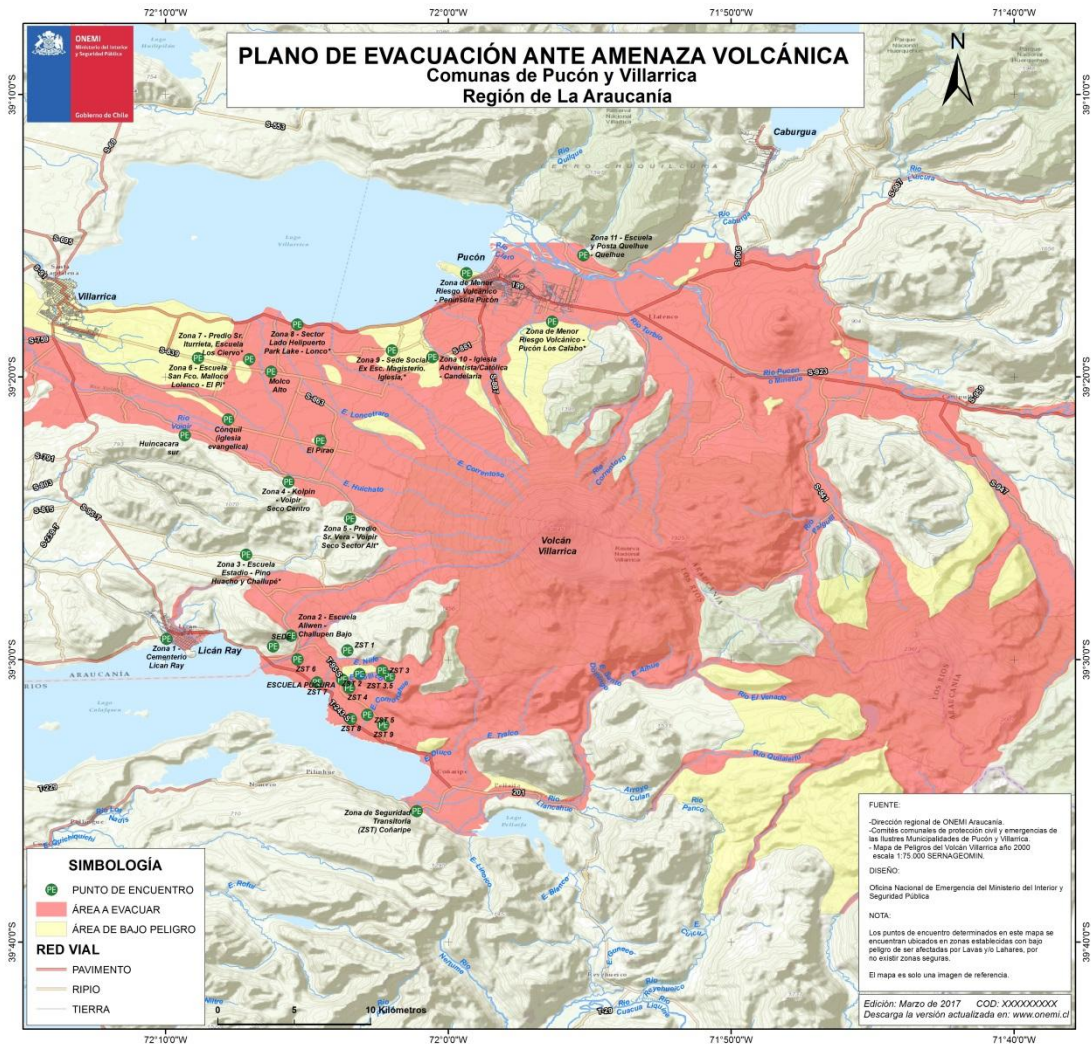


German Remote Sensing Data Center
German Aerospace Center

Overview on Satellite data acquisitions (CC 598)

Agency/Data Provider	Satellite/Sensor	Number of acquisitions
DLR	Rapideye	19
CNES / Airbus DS	SPOT-6 / 7	24
DMCII	UK-DMC	4
ISRO	Resourcesat-2	6
ROSCOSMOS	KSHMSAH	10
	Geoton	14
KARI	KOMPSAT-2	25
	KOMPSAT-3	11
CNSA	GF-1	30
ABAE	VRSS-1	2
INPE	CBERS-4	1
USGS	VHR-commercial, Landsat-8	>100 via HDDS

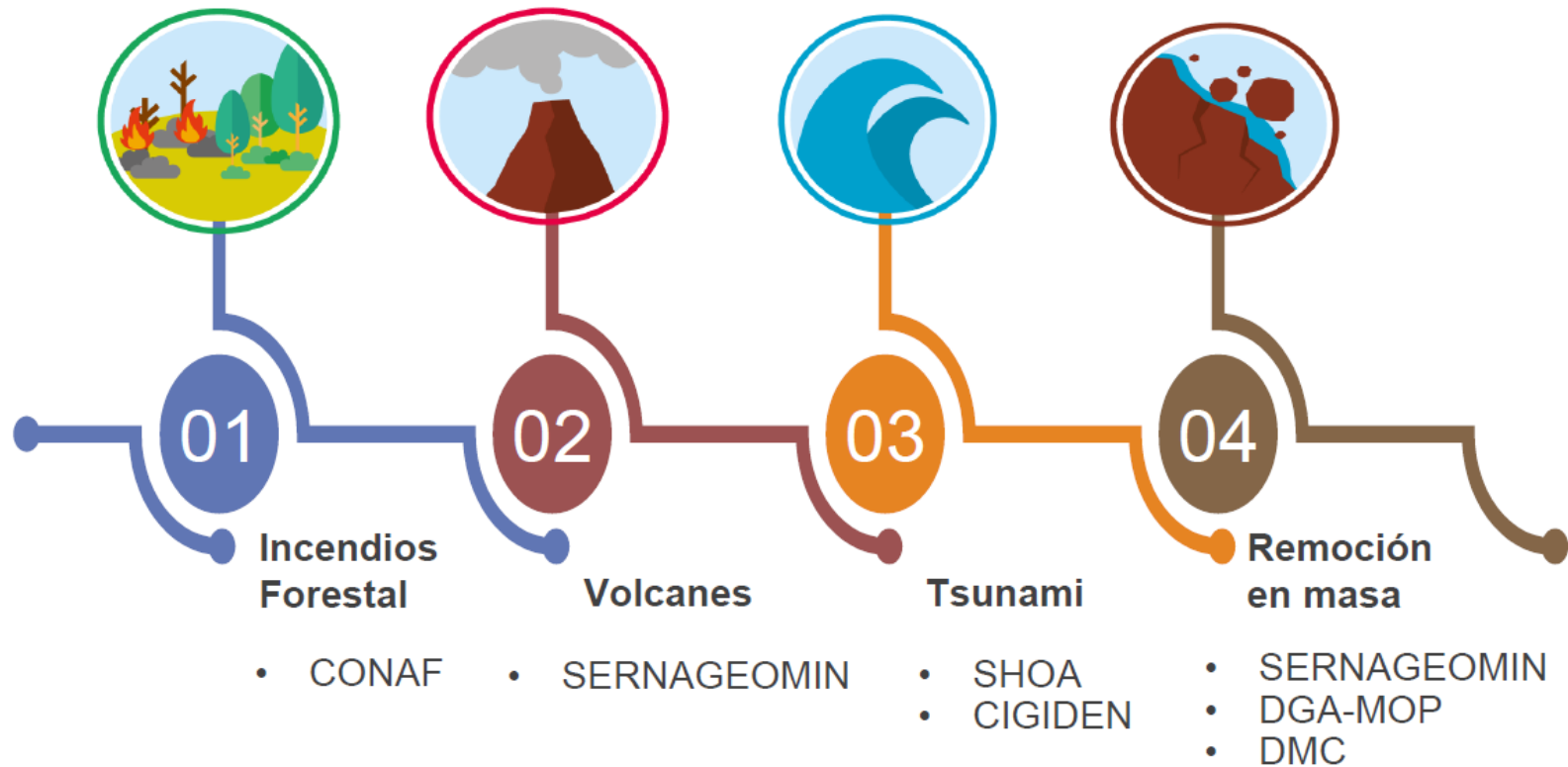
Ejercicios de Evacuación Volcán Villarrica /Volcanic evacuati



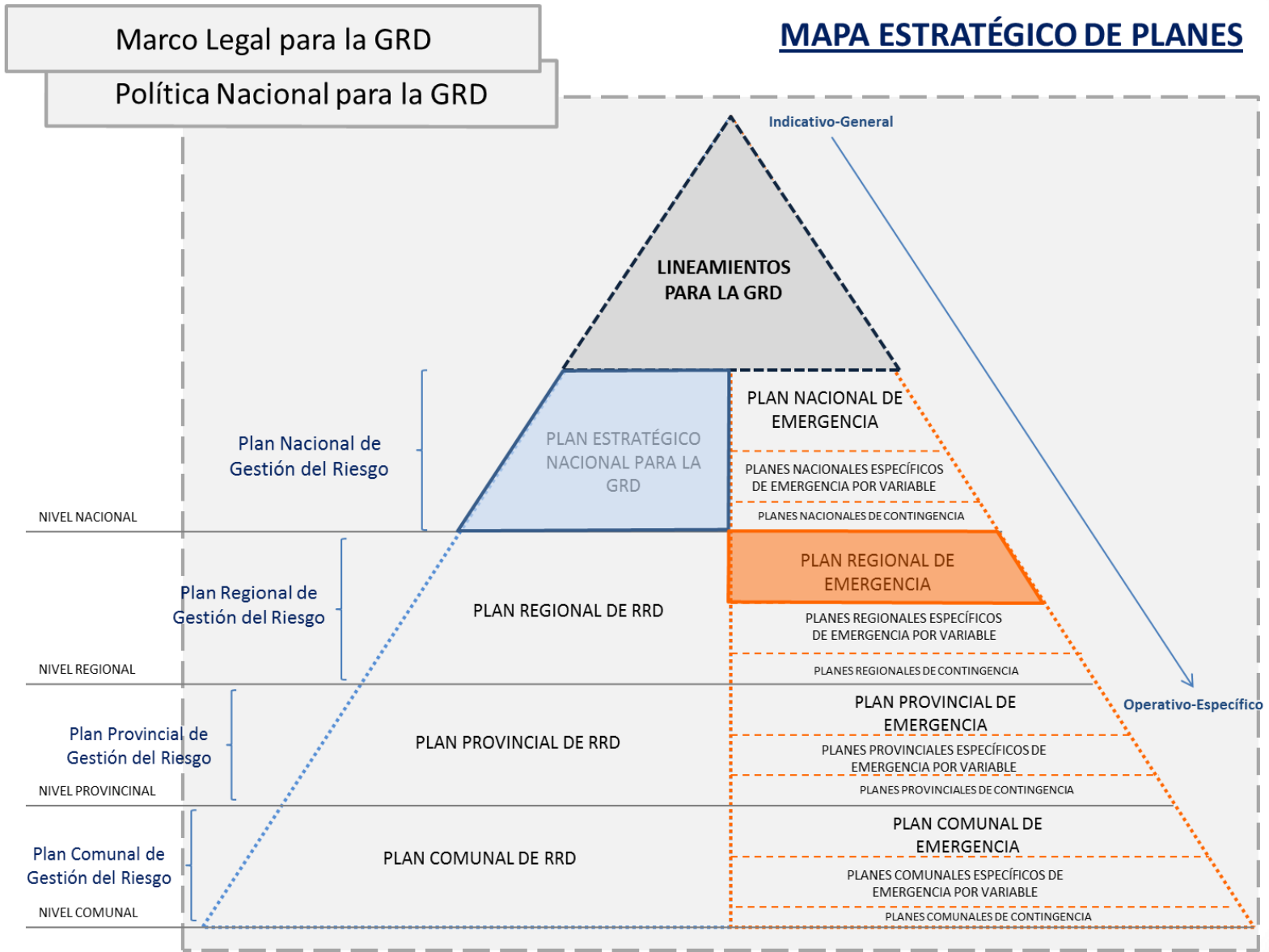
SIMULACROS		
REGIÓN	FECHA	EVENTO
Arica	30-may	Sismo / Tsunami
Tarapacá	15-jun	Sismo / Tsunami
Atacama	10-ago	Sismo / Tsunami
RM	31-ago	Sismo
Maule	05-oct	Sismo / Tsunami
Los Ríos	12-oct	Sismo / Tsunami
Araucanía	19-oct	Erupción Volcánica
O'Higgins	05-nov	Sismo / Tsunami
Aysén	14-dic	Sismo / Tsunami

Metodología para la RRD en Proyectos de Inversión Pública

Methodology Minister of Social Development for Disaster Risk Reduction in Public Investment Projects



PLANES DE EMERGENCIAS / Emergency Response Plans



MUCHAS GRACIAS

www.onemi.cl



ONEMI

Ministerio del Interior
y Seguridad Pública

Gobierno de Chile