

Proposal for the development of an Academic Network Americas



UN-GGIM

UNITED NATIONS INITIATIVE ON
GLOBAL GEOSPATIAL
INFORMATION MANAGEMENT

UN-GGIM: Americas, October 2016 México DF

Background

- **Dec 2015, NY:** UN-GGIM Bureau at its meeting convened in New York in discussed the merits and establishment of an **Academic Network** under the auspices of UN-GGIM as a means to capture and include the role and contributions of academia in global geospatial information management.
- **April 2016, Addis Ababa:** an exploratory **UN-GGIM Academic Network** meeting was convened as a Side Event to the Fourth High Level Forum on UN-GGIM, in, Ethiopia, on Tuesday 19 April 2016. In this meeting it was anticipated that **the Academic Network operates along the same lines as the Joint Board of Geospatial Information Societies (JB-GIS)** and is able to "self organise" and contributes to the activities of UN-GGIM in a similar and productive manner.

Background-2

- **April 2016**: referring to the Addis Ababa Declaration at the conclusion of the Fourth HLF, which endorsed **UN-GGIM facilitating the establishment of an Academic Network** as a strategic knowledge, research and training arm to assist its activities and objectives.
- **June 2016**: UN-GGIM Secretariat has formed an **Academic Network Task Team**, with members from different regions, and **has appointed Professor Abbas Rajabifard, from the University of Melbourne to Chair** the Task Team with a Mandate to start the process and consultation.
- **August 2016** : UN-GGIM experts meeting in New York endorsed the formation of an academic network and provided comments to the initial Terms of Reference
- **September 2016** UN-GGIM Academic Network elected inaugural officers and it is currently working on finalizing ToR

Objectives of Academic Network

- The **UN-GGIM Academic Network** **will be a coalition of recognized universities, research and education centers** or equivalent involved in the research, development and training on geospatial and land information and related matters.
- The **Academic Network** **will be a platform** for the academic community to provide input and to support UN-GGIM in achieving its vision and goals by generating a platform for academic community to input to the UN-GGIM process in the form of strategic knowledge, research, education and training, and **will be a strategic arm** to empower UN-GGIM to achieve their vision and goals.
- The **Academic Network** will provide both **research and education capabilities** for UN-GGIM and affiliated members to identify and response to challenges and opportunities in which UN-GGIM and related UN offices can achieve their visions.

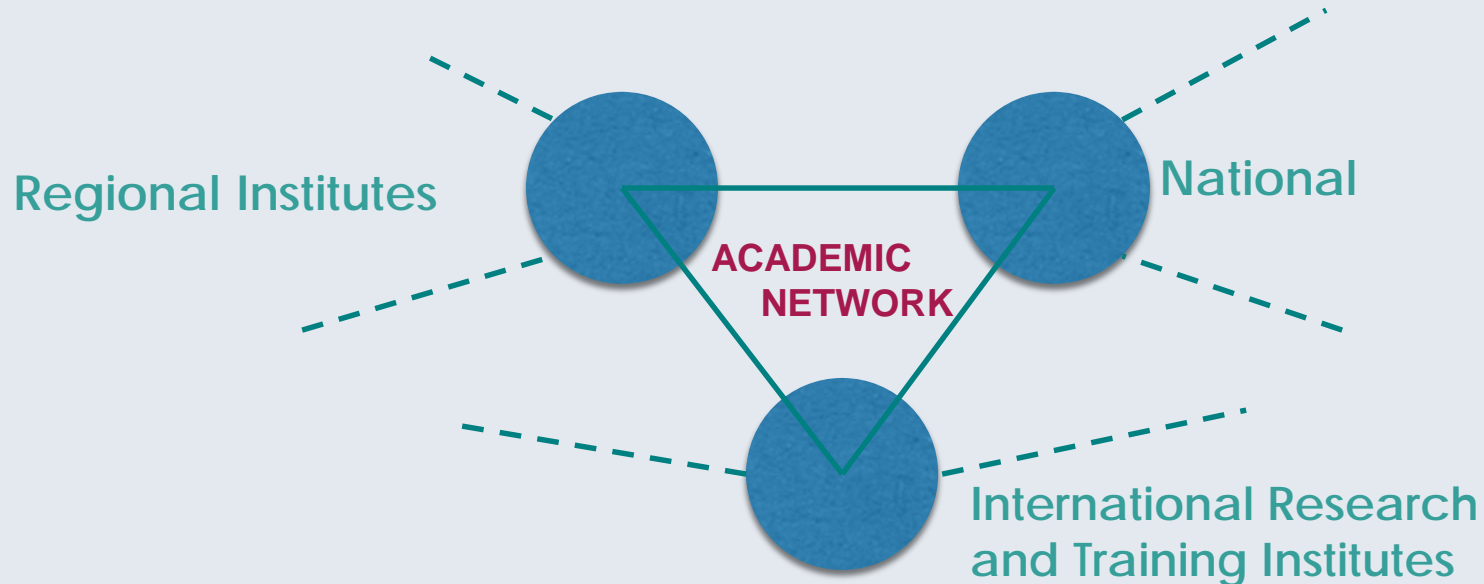




UN-GGIM

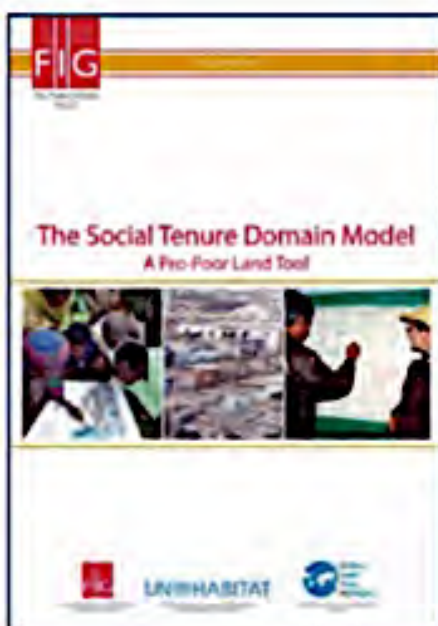
UNITED NATIONS INITIATIVE ON
GLOBAL GEOSPATIAL
INFORMATION MANAGEMENT

UN-GGIM academic network

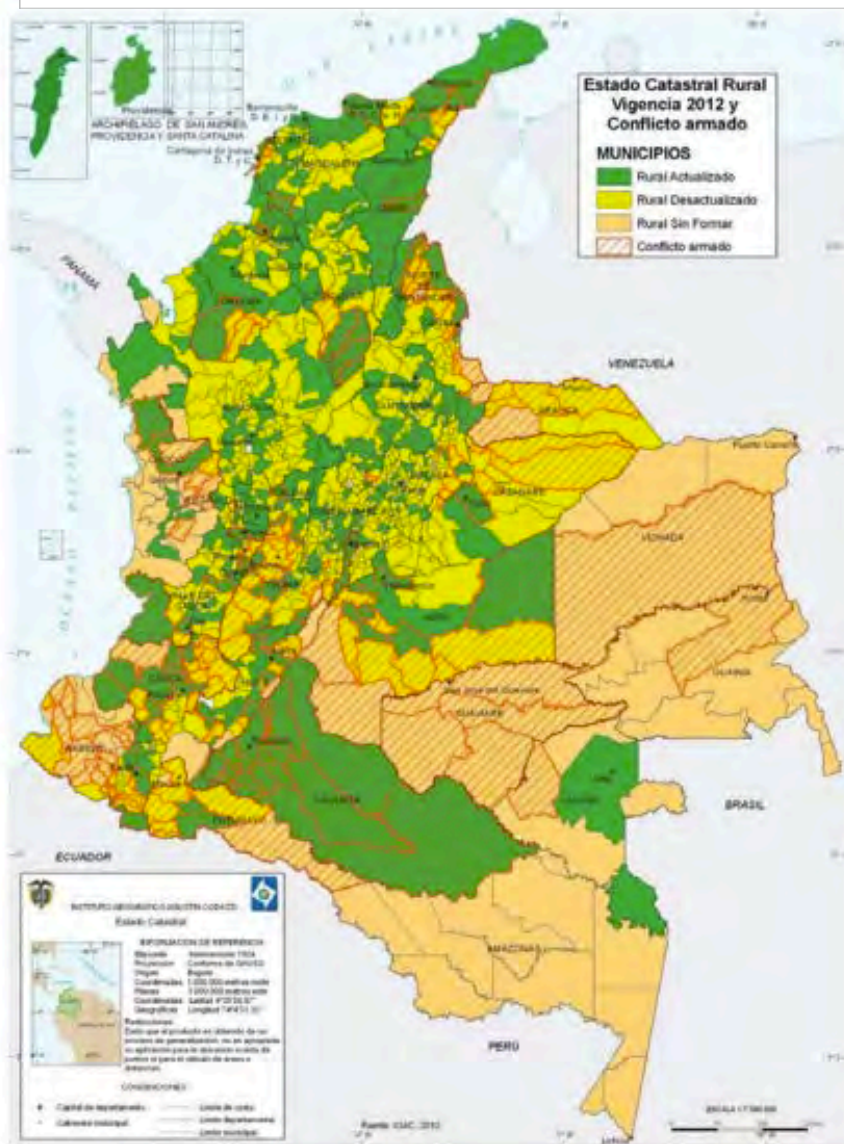




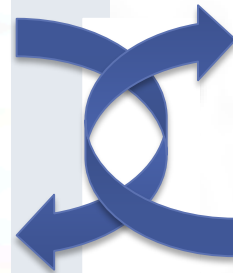
 (Ctrl) ▾



There is a direct correlation between poverty and cadaster problems

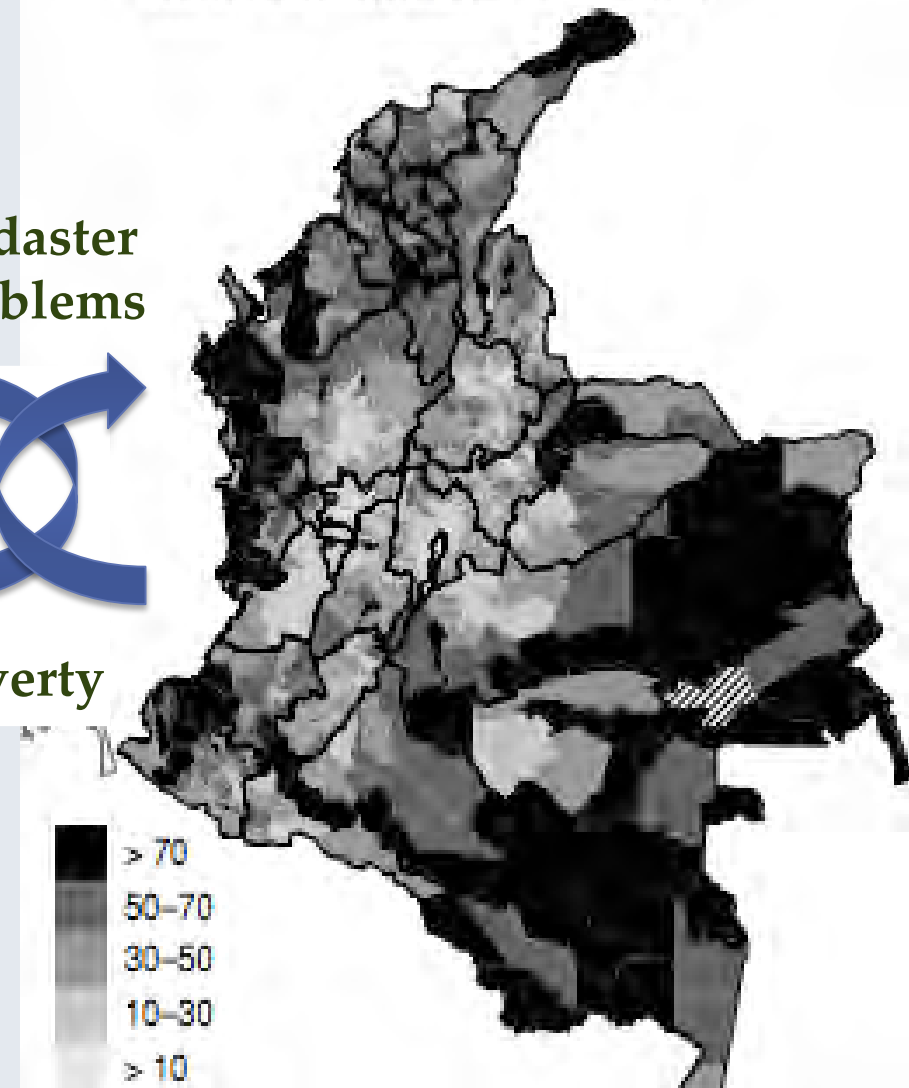


Cadaster problems



Poverty

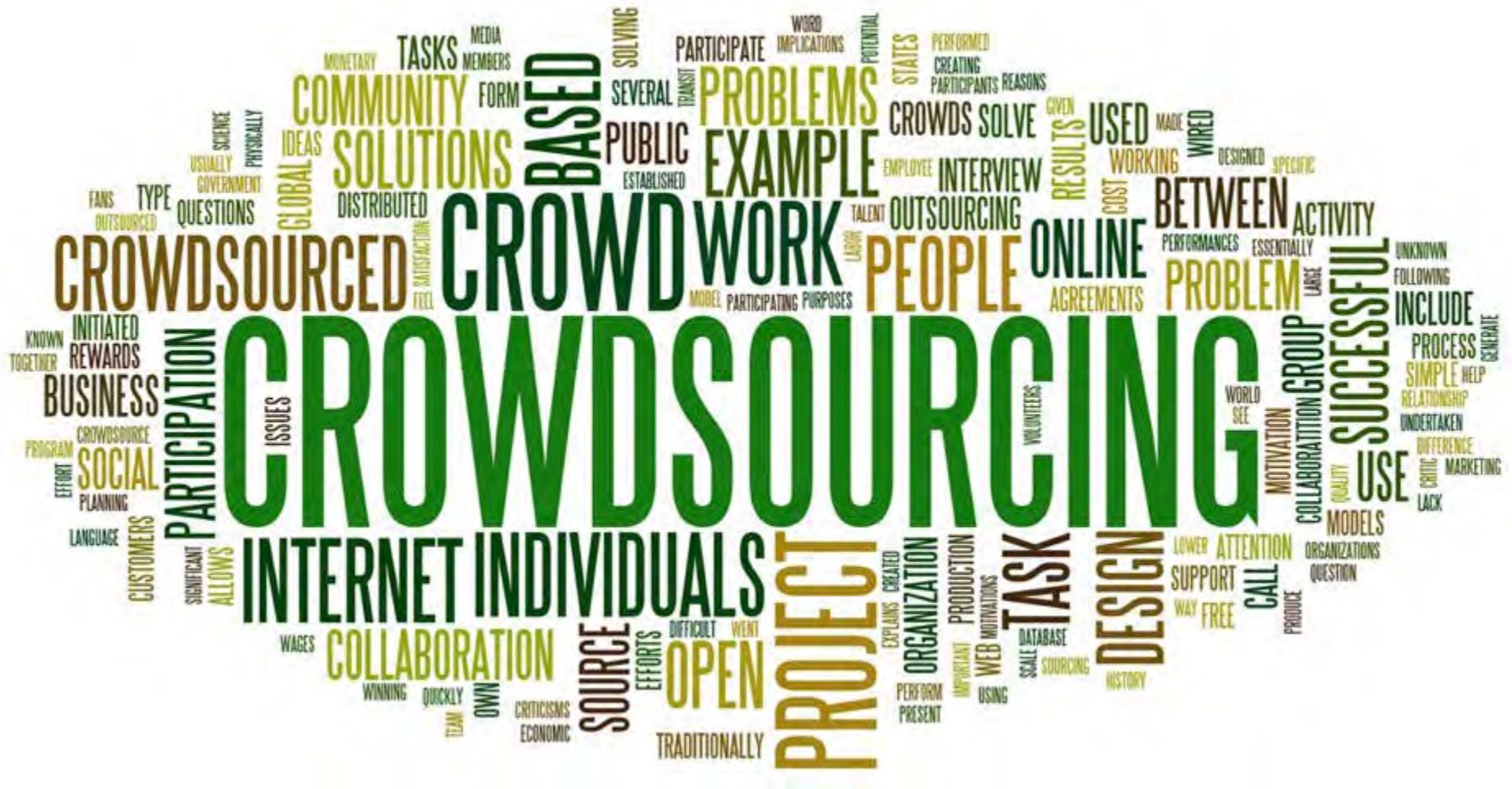
C. Porcentaje municipal de personas con necesidades básicas insatisfechas





Mapping the most vulnerable

Mapas de los mas necesitados



CROWDSOURCING: THE FUTURE

Cadaster 4.0

Cadaster for people made by people.

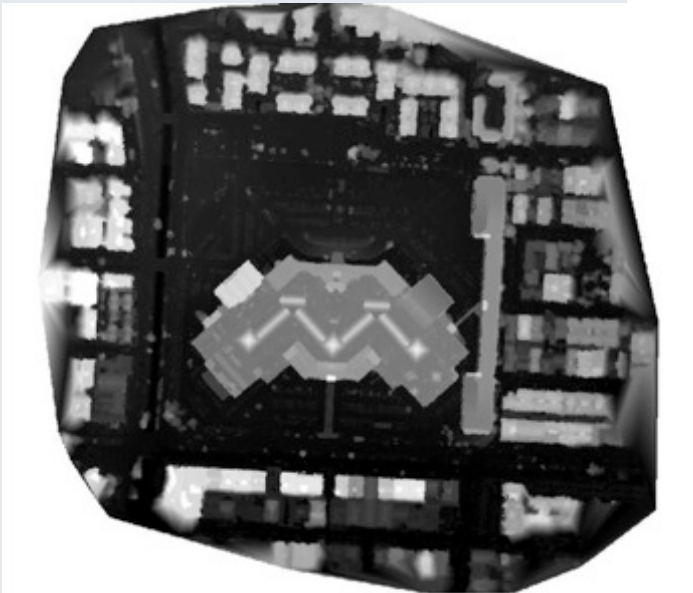
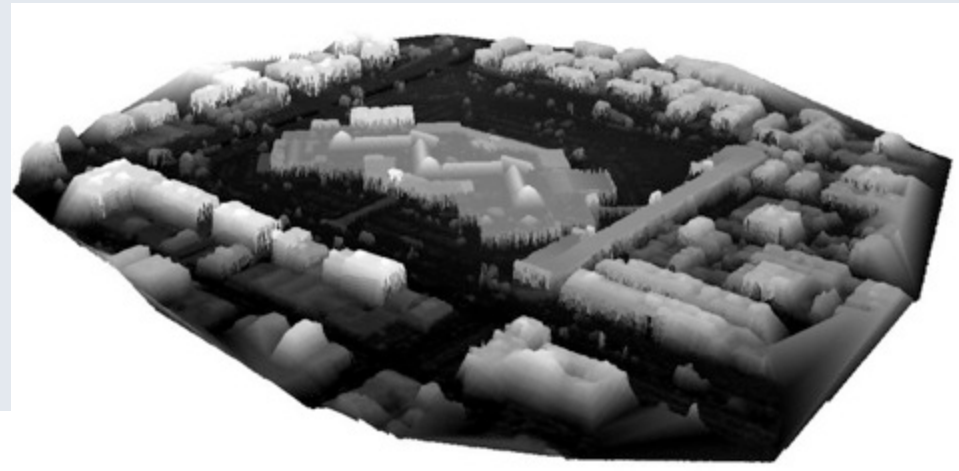
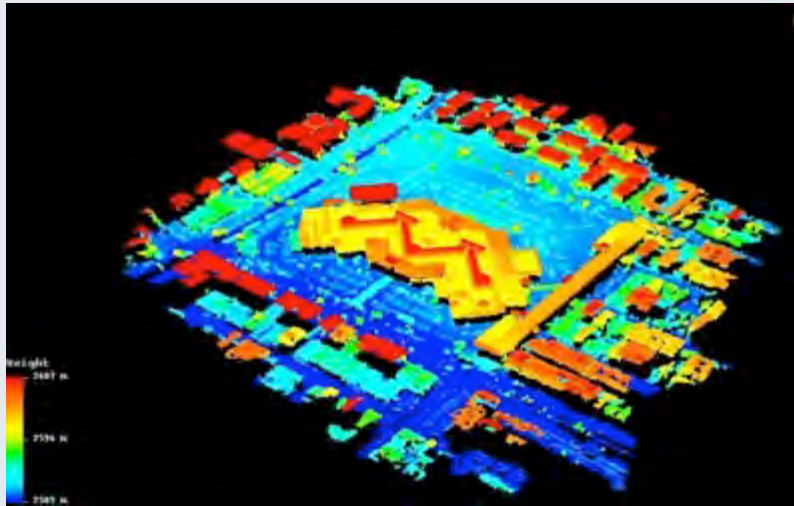
- Cadastre 4.0 as a **paradigm**
- **close the circle** between new technologies and automatization of processes, products and services and stakeholders, including citizen and land owners as essential partners at equal level.
- It is a **partnership model** building coalitions /symbiosis between professionals in private and public service, between citizen and users and public authorities and between technology and society.
- Cadastre 4.0 establishes **links between the virtual and real world** securing interests of land owners, society, governments and economy.
- It sets the scene for permanent communication between **people, procedures and products**. The Internet of Things is amended by a social aspect.
- Cadastre 4.0 if implemented, will help to **save resources** and at the same time will provide solutions in a more flexible, a more efficient and a more social way.



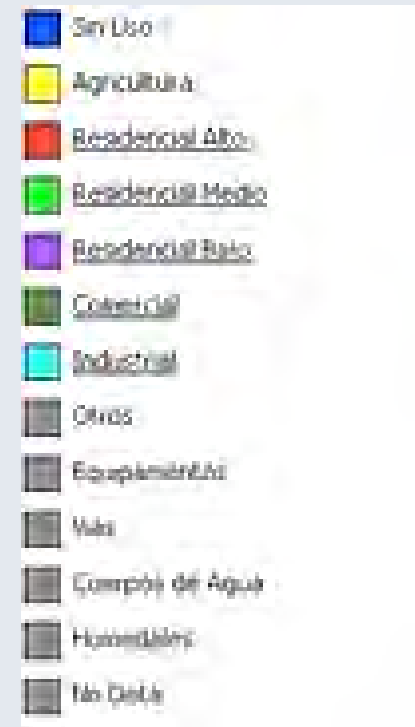
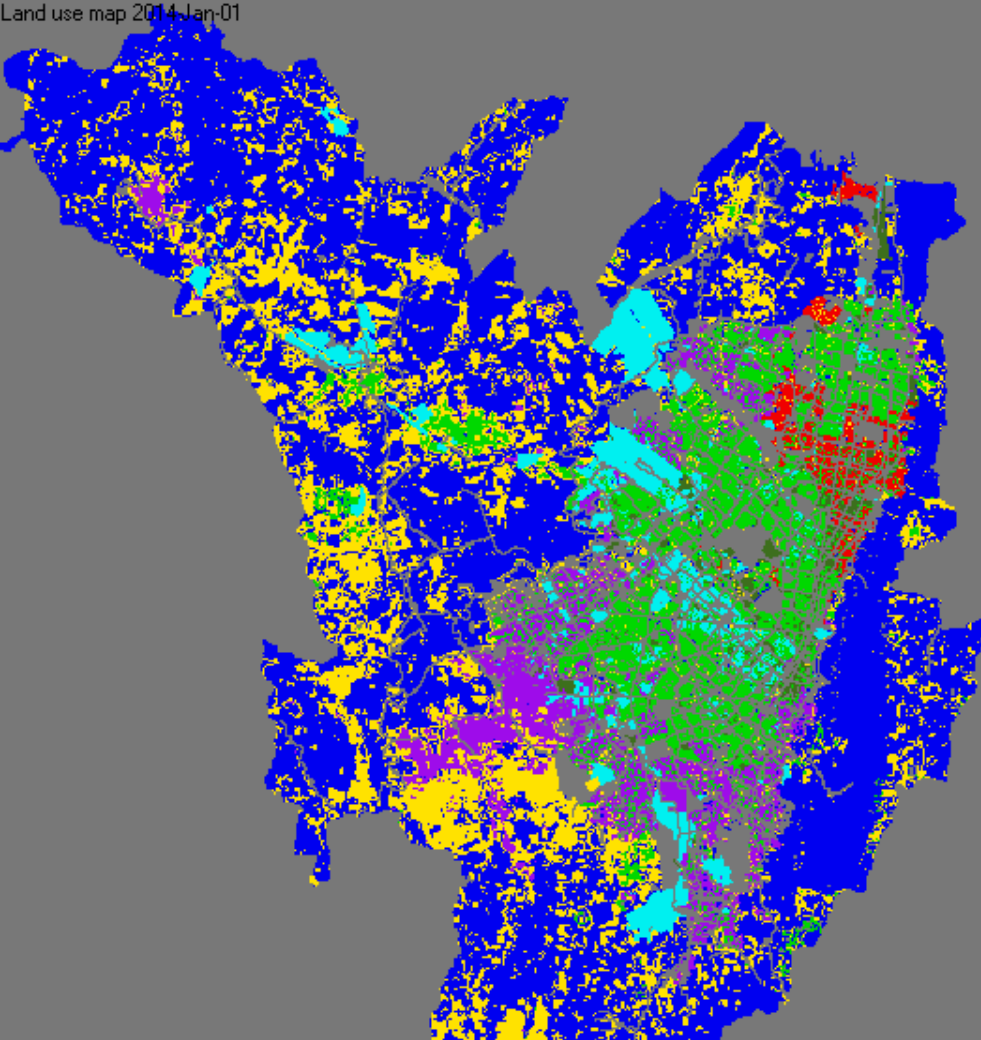
THIS TOOL ESTIMATES LAND VALUE INCREASES BASED ON ROAD INVESTMENT

Esta herramienta ayuda estimar incrementos en los valores de la tierra dependiendo de las inversiones en infraestructura

DEM- DSM -DTM



X, Y Z COORDINATES



WE HAVE DEVELOPED A GEOGRAPHIC TOOL TO IMPROVE UNDERSTANDING RELATIONSHIP BETWEEN RURAL LAND AND INFRASTRUCTURE

*Nosotros hemos desarrollado herramientas para tratar de unir estos dos
factores*

Academic Network Inaugural officers

- Prof Abbas Rajabifard,
The University of
Melbourne, Australia
(Chair)
- Prof Daniel Páez,
University of Los Andes,
Colombia (Secretary)



Academic Network Task

Team Members

- Prof Abbas Rajabifard,
The University of Melbourne, Australia (**Chair**)
- Prof Daniel Páez,
University of Los Andes, Colombia (**Secretary**)
- Prof Huayi Wu, Wuhan University, China
- Prof Joep Cromptvoets, KU Leuven, Belgium
- Prof David Coleman, University of New Brunswick, Canada
- Prof Harlan Onsrud, University of Maine, USA
- Prof Menno-Jan Kraak, University of Twente, Netherlands
- Prof Josef Strobl, University of Salzburg, Austria
- Prof Maria Antonia Brovelli, Politecnico di Milano, Italy



UN-GGIM Americas

After conversations with multiple academic members in the region and by initiative of Prof Beshem Rarlal we propose UN-GGIM Americas to:

- Support the Formation of a task team to develop the ANA (Academic Network America)
- Request the Task force to:
 - Provide advice on an appropriate relationship of ANA to the UN-GGIM academic network
 - Create a database of interest researchers in the region
 - Report back to UN-GGIM Americas on its recommendation

October 2017 Cartagena – Colombia

COMM 717

FIG Annual meeting and First meeting ANA



Universidad de
los Andes

Fed McGrath