

The National System of Statistical and Geographic Information and the Public Information Service



Background

- On 7 April 2006 was published in the Official Gazette the Decree that declared reformed Articles 26 and 73, section XXIX-D of the Constitution of the United Mexican States, through which a section B of Article 26 of the Constitution was added, which states that the Mexican State will have a National System of Statistical and Geographic Information (SNIEG) and that the responsibility for regulating and coordinating such a system will be in charge of an agency with autonomy technical and managerial, legal personality and assets of its own.



Background

- Subsequently, on 16 April 2008 was published in the Official Gazette the Decree by which the Law of National Statistics and Geographic Information (LSNIEG) is issued, which is regulation of Section B of Article 26 of the Constitution of the United Mexican States, is public policy, social interest and generally observed throughout the Republic and regulates:
 - A. The National System of Statistical and Geographical Information
 - B. The rights and obligations of informants of the System
 - C. The organization and functioning of the National Institute of Statistics and Geography.



Background

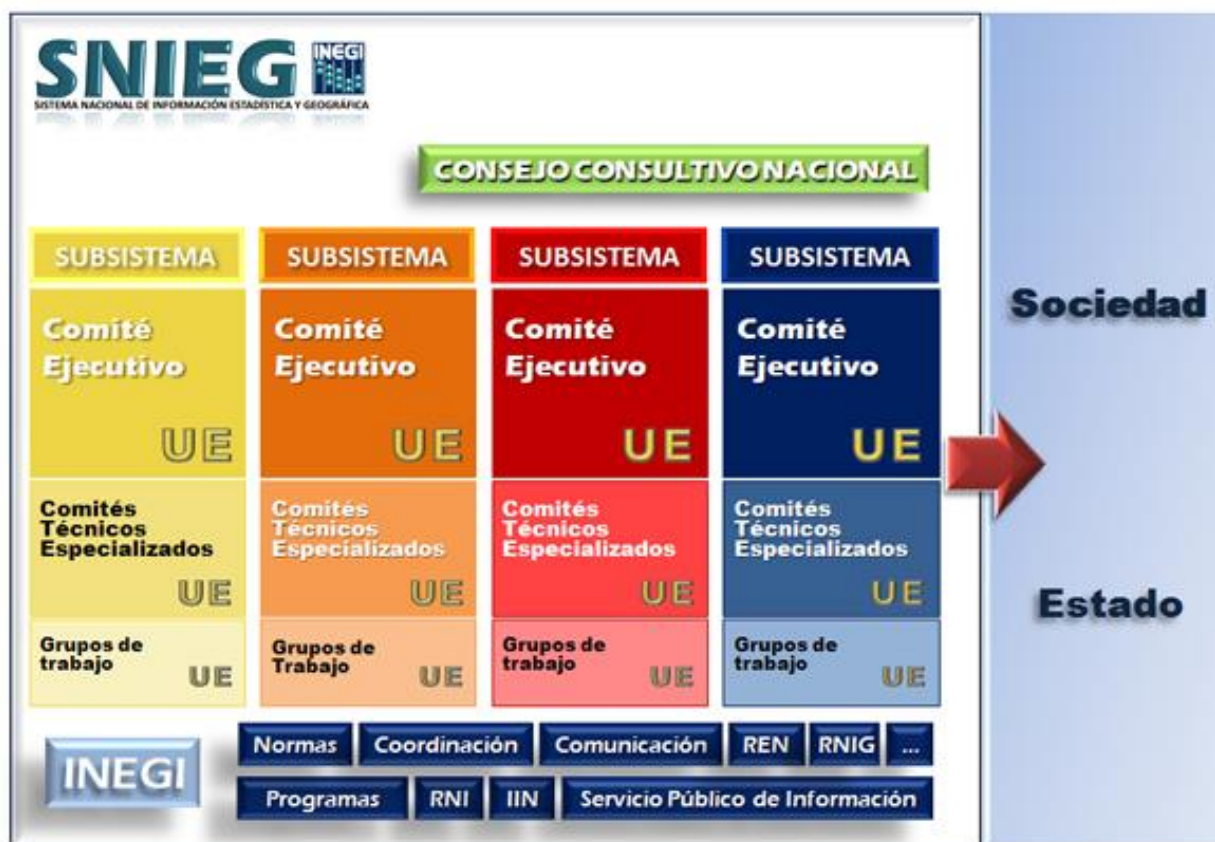
D. The administrative offenses and administrative means of defense against the acts and resolutions of the Institute.

- At the same time establishes INEGI autonomy in order to be responsible for regulating and coordinating the System.



The National System of Statistical and Geographical Information

- It is the set of units organized through Subsystems, coordinated by the Institute and articulated by the National Information Network for the purpose of producing and disseminating the information of National Interest.



UN-GGIM:Americas
REGIONAL COMMITTEE OF
UNITED NATIONS
ON GLOBAL GEOGRAPHICAL
INFORMATION MANAGEMENT
FOR THE AMERICAS



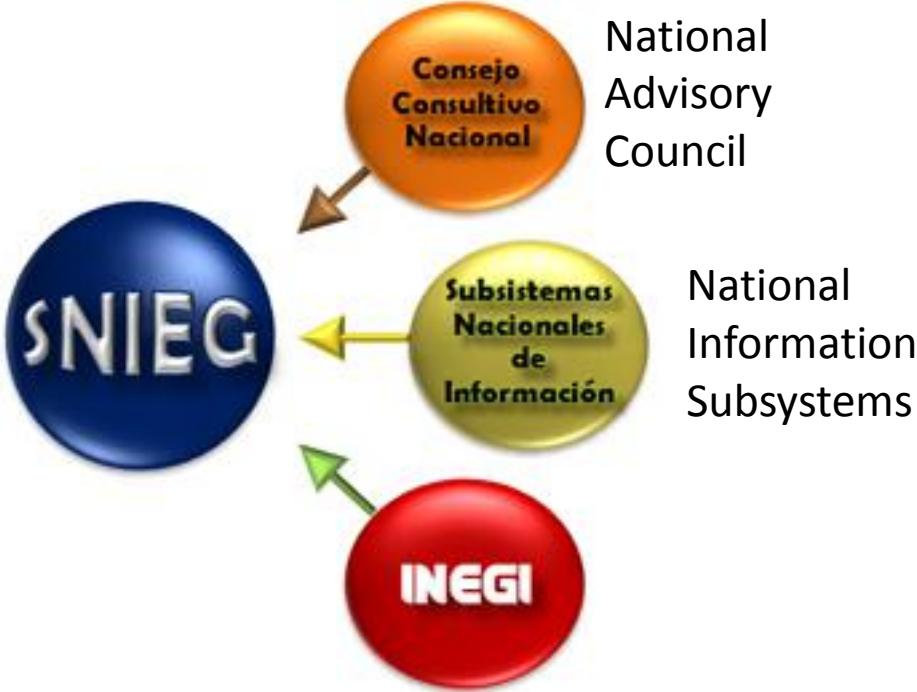
CHILE
MÉXICO



Asociación de Estados del Caribe
Association des Etats de la Caraïbe



Members of the System



Characteristics, guiding principles and objectives

Characteristics

- Quality
- Relevant
- Truthful
- Timely

Guiding principles

- Accessibility
- Transparency
- Independence
- Objectivity

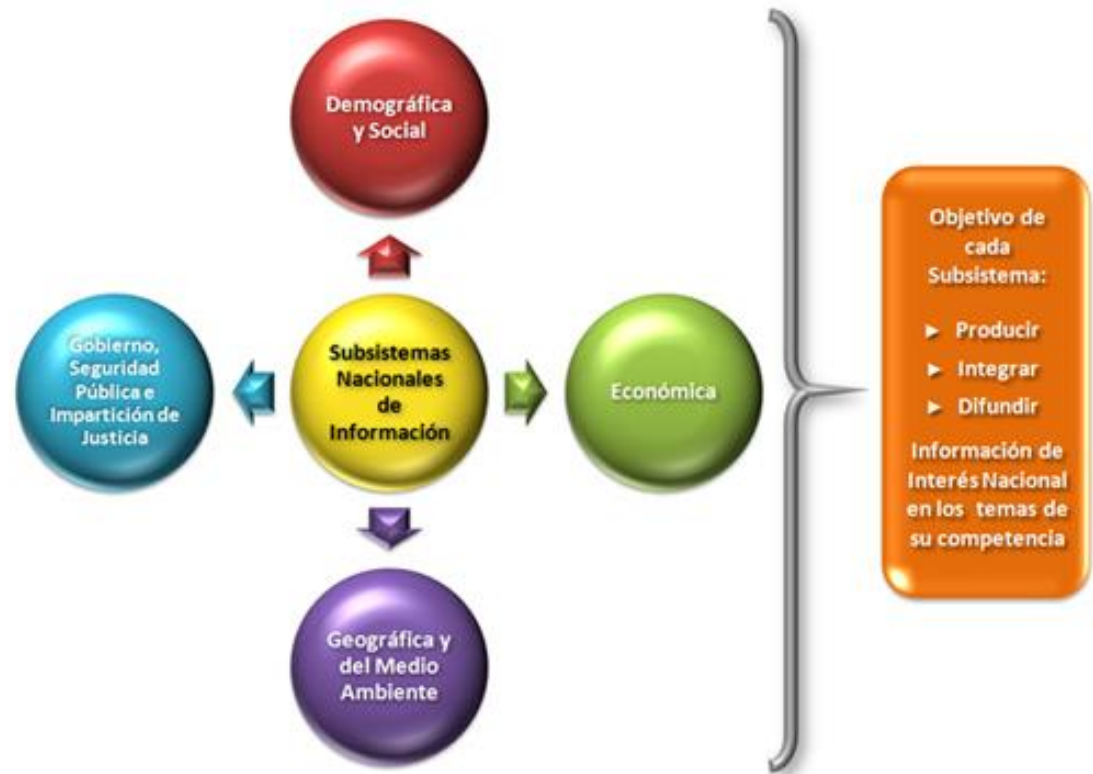
Objective

- To produce information
- The timely dissemination of information through mechanisms to facilitate consultation
- Promote knowledge and use of information
- Preserve information

Subsystems

- To organize the System the following four National Information Subsystems was established, where each is intended to produce, integrate and disseminate information of national interest in matters within its competence are established.

- Demographic and social
- Economics
- Geographic and Environmental
- Government, Public Security and Enforcement of justice



Subsystems

- If it is necessary to create other Subsystems, will be the Governing Board of the INEGI, following a favorable opinion of the National Consultative Council, which authorized its formation, having noted at least its information infrastructure, key indicators to be produced and the sources where you will get the basic information, with the support of the Units. For its organization, each subsystem has an Executive Committee (EC).



About Metadata and the National System of Statistical and Geographic Information

- LSNIEG
- Section V. About State Units.
 - Article 33. The State Units, others than the Institute, when developing activities related with production, integration, maintenance and dissemination of information of national interest shall:
 - VI. Safeguard and preserve information and metadata or specific specifications of the application of methodologies which they may have been used in the preparation thereof, in the form and terms, in agreement with the coordinator of the appropriate unit, that the Institute defines.
 - Article 88. ... The Institute shall disclose and preserve metadata or specific terms of the application of methodologies that may have been used in the preparation of information...

Public Information Service

- According to Article 98 of the Law of the National Statistical and Geographic Information, the Public Information Service exist to make available to users, subject to the rules that effect issued by the Governing Board of the Institute, all Information of National Interest.
- Article 99 states that the Institute shall make the information available to users via the Internet, as well as the Consultation Centers established in the country and that the consultations carried out by the users by these means will be offered by the Institute for free.



Public Information Service

- Article 100 of the Law of National Statistics and Geographic Information states that the Institute, following international best practices, will make available upon request, micro-data from national surveys and representative samples of the census operations you make with the disaggregation as possible without violating the confidentiality and privacy of the basic information provided in the Act.



Public Information Service



INSTITUTO NACIONAL DE ESTADÍSTICA Y GEOGRAFÍA

 México

[Inicio](#) | [Contacto](#) | [Síguenos:](#)






Estadística ▾
Geografía ▾
Investigación ▾
Productos y Servicios ▾
Acerca del INEGI ▾

IR

ESTIMACIÓN OPORTUNA DEL
PRODUCTO INTERNO BRUTO
TRIMESTRAL

- Estimación de la evolución de la economía mexicana a tan solo 30 días
- México a la vanguardia en información estadística de corto plazo
- Con información más oportuna... decisiones confiables y sustentadas

De interés

- Anuario estadístico y geográfico de los Estados Unidos Mexicanos
- Censos Económicos 2014
- Índices de Precios
- DENUE
- Microdatos
- Gobierno
- Ocupación y empleo
- PIB y Cuentas Nacionales de México
- Encuesta Intercensal
- Para desarrolladores
- Catálogo Único de Claves de Áreas Geoestadísticas Estatales,

English

México en cifras
Información nacional, por entidad federativa y municipios

Seleccione la entidad en el mapa o en la siguiente lista:

▾

Ir



Ciclos económicos



Noticias | Calendarios | Sala de prensa

Indicadores económicos

Síntesis de coyuntura

SNIEGI INEGI

SISTEMA NACIONAL DE INFORMACIÓN ESTADÍSTICA Y GEOGRÁFICA

Si vives en la Zona Metropolitana de la Ciudad de México, forma parte del equipo que realizará la

Encuesta Origen-Destino en Hogares de la Ciudad de México 2016

Ing. José Luis Mondragón Garibay
Director of Geomatics Solutions
INEGI

joseluis.mondragon@inegi.org.mx



Because we provide information for all

...

01 800 111 46 34

www.inegi.org.mx

atencion.usuarios@inegi.org.mx

Mexico counts on INEGI !