

COVID-19: Strategies for a geospatial response in the Americas

UN-GGIM Virtual Seminar Series Panama Case

Isis Tejada H.

National Center for Geospatial Information
National Geographic Institute
“Tommy Guardia”



About Panama...

- Estimated population in 2018: **4,158,783**.
- Men: 2,085,950 (50.2%)
- Women: 2,072,833 (49.8%).

Population



- Total Area of the Republic: **75 517,2** km² (including the areas of continental water bodies).

Area



- The Balboa is the currency of the country.
- Panama's economy grew by 3.73% in 2019

Others





Hispano-indigenous group, is one of the largest groups in Panama.



Indigenous groups
Kuna
Emberá y Wounaan
Ngäbe-Buglé
Bokota
Teribe
Bri bri



Afrocolonial population and Afro-Caribbean population



Other ethnic groups: The largest of these are from China, who came to the Isthmus during the construction of the Transisthmian railway in 1850. Other groups are the Hindus, Hebrews, and Centralamerican.

The geospatial response to COVID -19 collaborating with two programs:



It consists of the application of six security rings to prevent the spread of COVID-19. "Stay at Home", ROSA Program ", modules for care, Individual Notification of Case Obtained, Modular Hospital, Recovery Phase.

It is an emergency plan and relief social assistance for those affected by the global pandemic of COVID-19.





Food bags



Boucher



Rescue



Panama solidarity

CONFORMATION OF THE TECHNICAL COMMITTEE FOR LOGISTICS OF THE SOLIDARITY PLAN

Inventory of available information

Disposition of external data

New information to generate

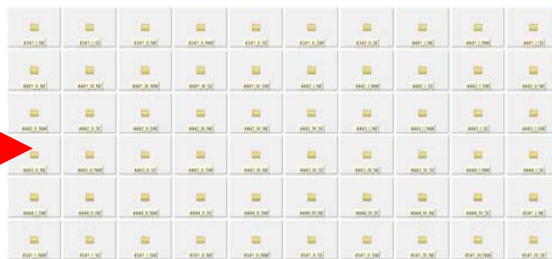
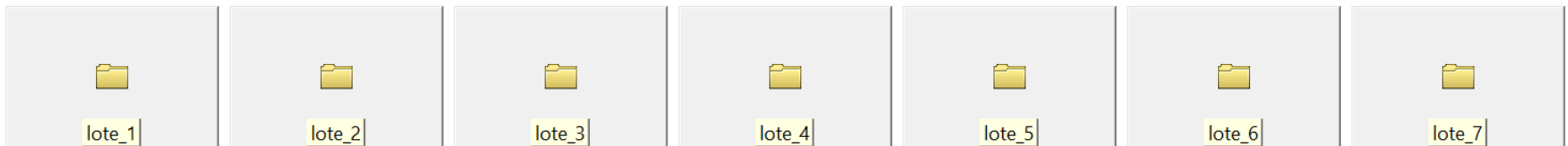
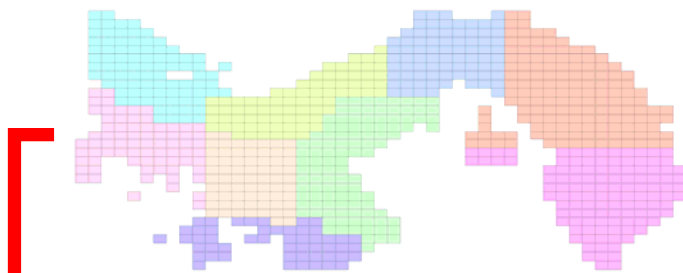
Aeronaval Service and the National
Geographic Institute



Vector Information

Information source from the national cartography

- 814 maps 1:25 000 y 1 222 maps 1:5000



Catalog Tree

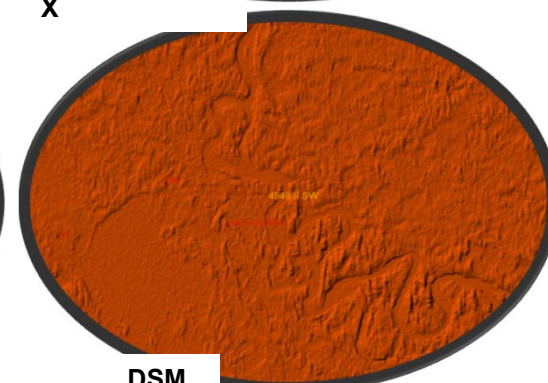
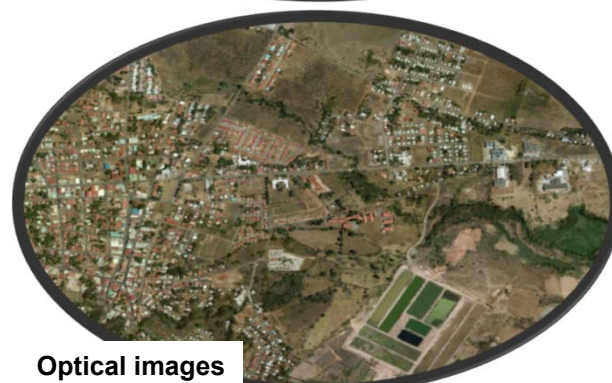
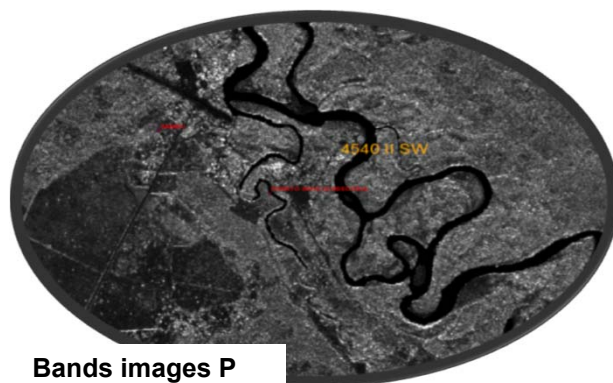
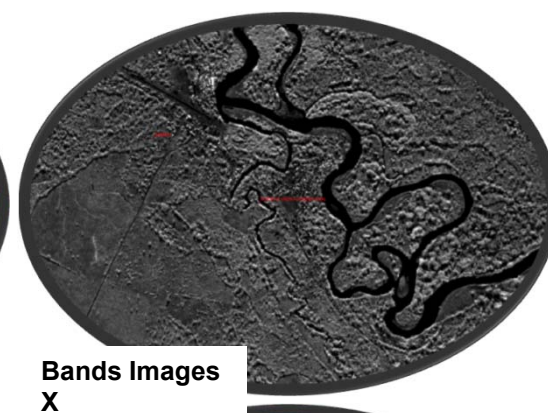
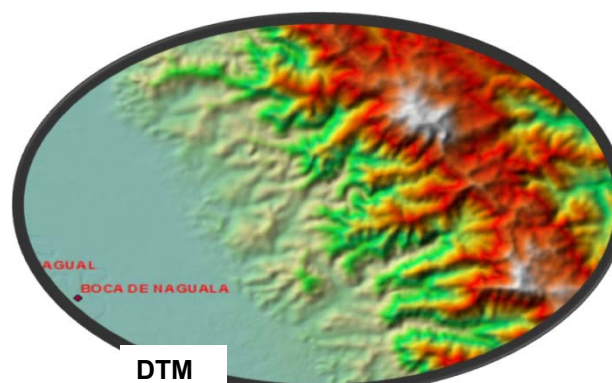
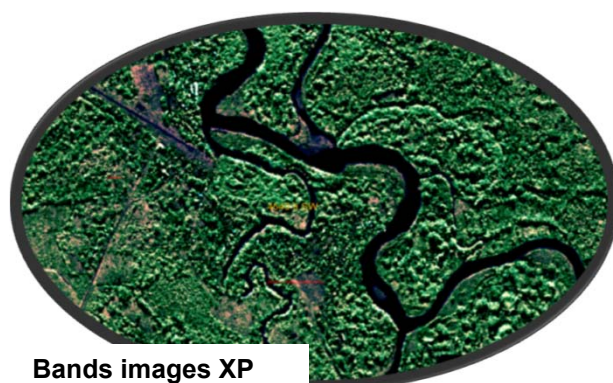
- 17N
 - 4341_I_NE
 - 4341_I_SE
 - 4341_II_NE
 - 4341_II_NW
 - 4341_II_SE
 - 4341_II_SW
 - 4342_II_SE
 - 4441_I_NE
 - 4441_I_NW
 - 4441_I_SE
 - 4441_II_NE
 - 4441_III_NE
 - 4441_III_NW
 - 4441_III_SE

Contents Preview Description

- Comunicacion_y_Transporte
- Edicion
- Estructura
- Hidrografia
- Limites_Administrativos
- Poblado
- Relieve
- Vegetacion
- 4341_I_NE.dwg
- 4341_I_NE.tif
- Logo ANATI.jpg
- Logo IGNTG.jpg
- Logo MOP.jpg
- Logo Oficial-Gobierno-Nacional.jpg

- Estructura
 - estr_a_
 - estr_l_
 - estr_p_
- Hidrografia
 - hidr_cuer_agua_a
 - hidr_cuer_agua_mar_ocea_a
 - hidr_dren_l_
 - hidr_line_cost_l_
- Poblado
 - pobl_area_urba_a
- Relieve
 - reli_subm_aren_a
 - reli_subm_lodo_fang_a
- Transporte
 - coyt_aero_l_
 - coyt_carr_auto_corr_l_
 - coyt_carr_call_l_
 - coyt_carr_primaria_l_
 - coyt_ferr_l_
 - coyt_muel_atra_l_
 - coyt_pist_ater_l_

Raster Products



INTERACTION PLATFORMS

 Catálogo de Mapas, Servicios, Datos. Acceder	 Publicación de Servicios Web OGC Acceder	 Publicación de Mapas y Datos Geoespaciales Acceder	 Publicación de Mapas y Aplicaciones Acceder
---	---	---	--

Generation of the Country Database.

22 Fundamental Data information layers .
6 Administrative Policy Division layers in WMS.

<https://geo-01.innovacion.gob.pa/>

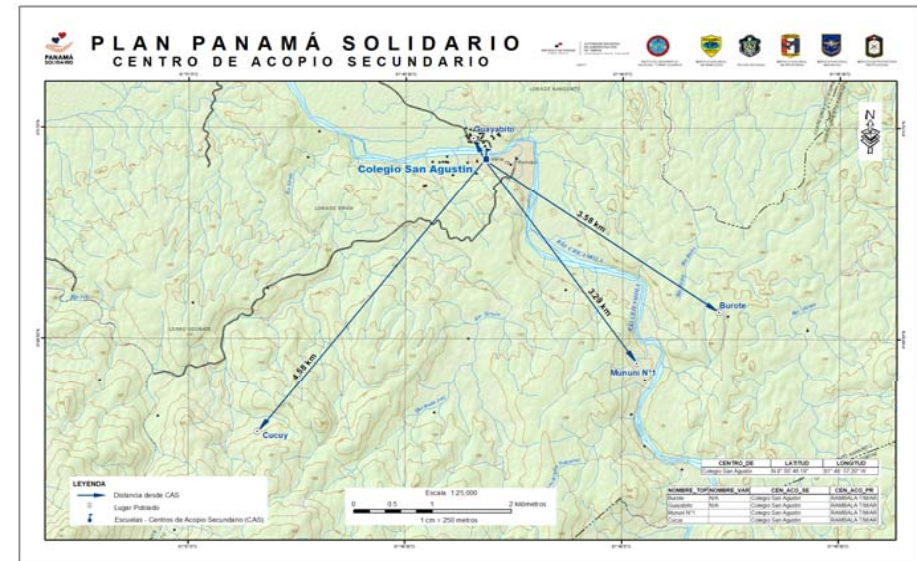
BD Z 17
BD Z 18 Projected to Z17N
Country database

Resulting Products...



Scale: 165K, 225K, 250K, 336K, 345K, 500K, 600K.

Maps for distribution and medical emergencies



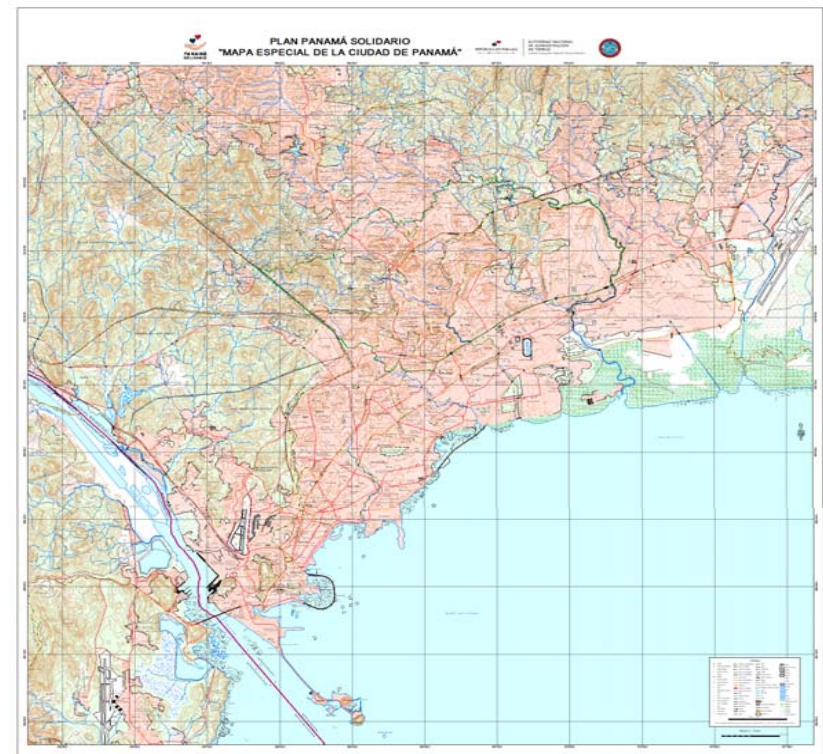
Scale 1:25 000



Scale: 165K, 225K, 250K, 336K, 345K, 500K, 600K.

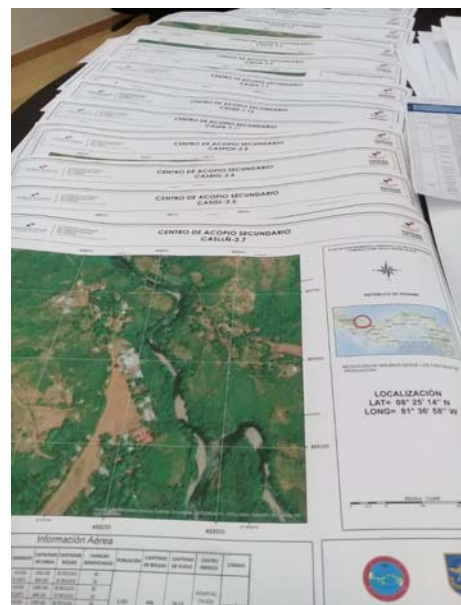
Maps for humanitarian aid distribution and
medical emergencies

Maps for determining new routes for waste collection

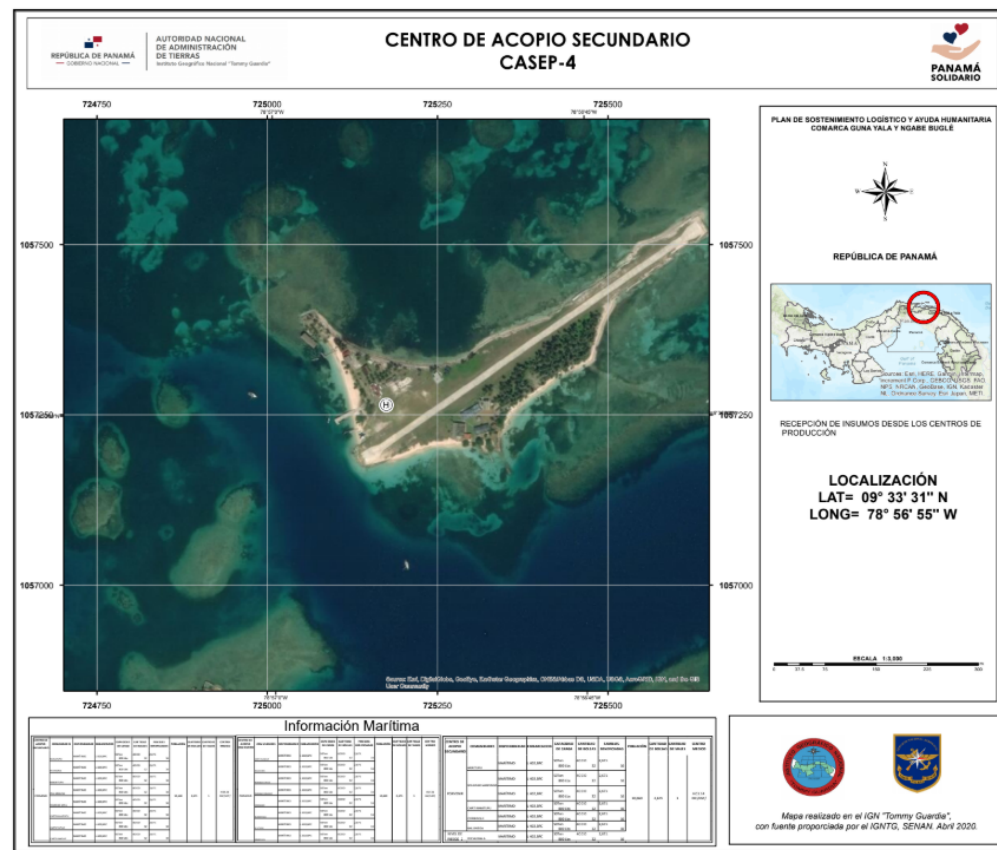
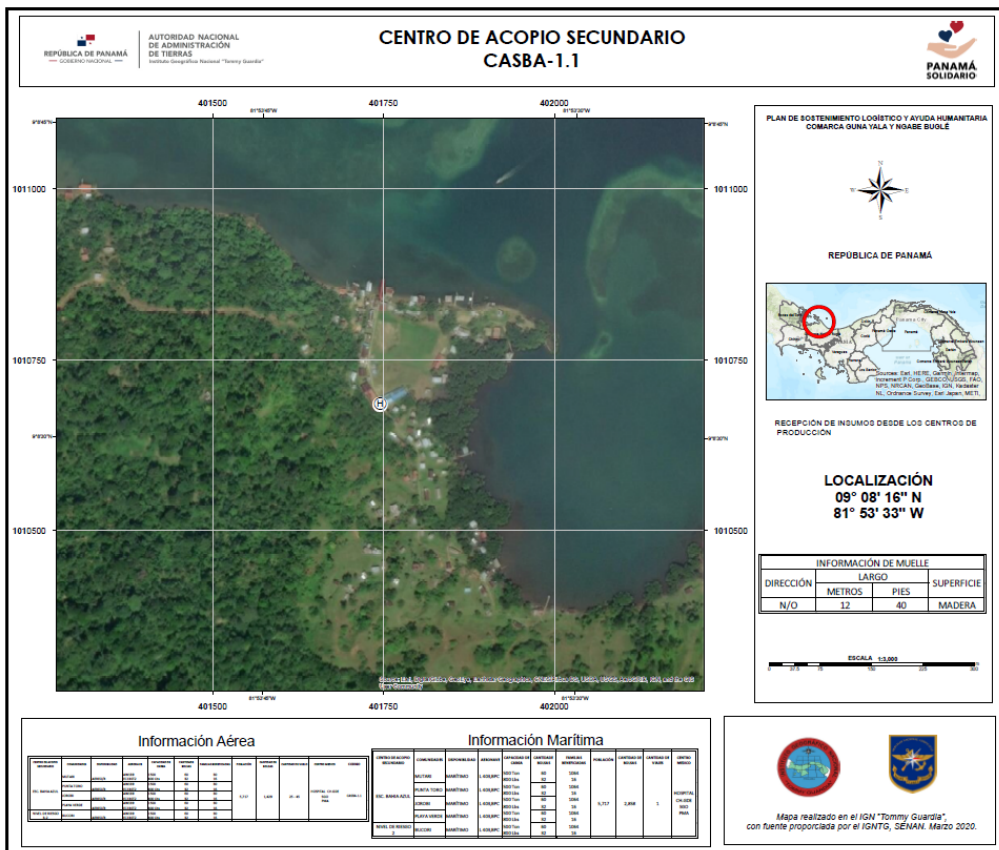


Scale 1:15 000

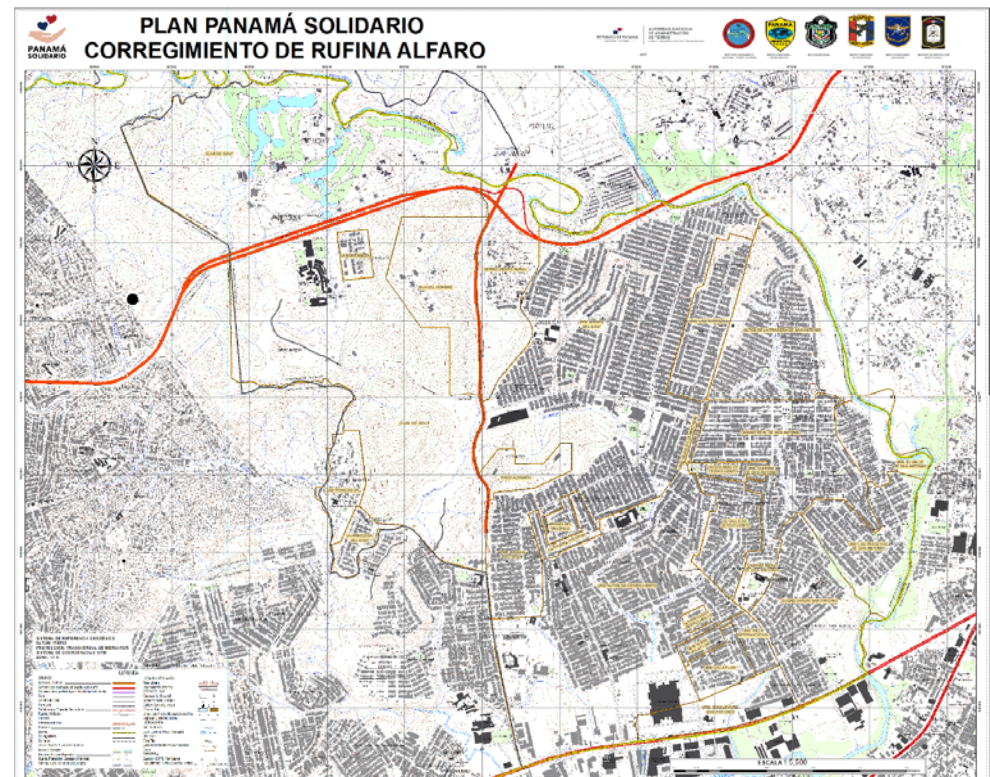
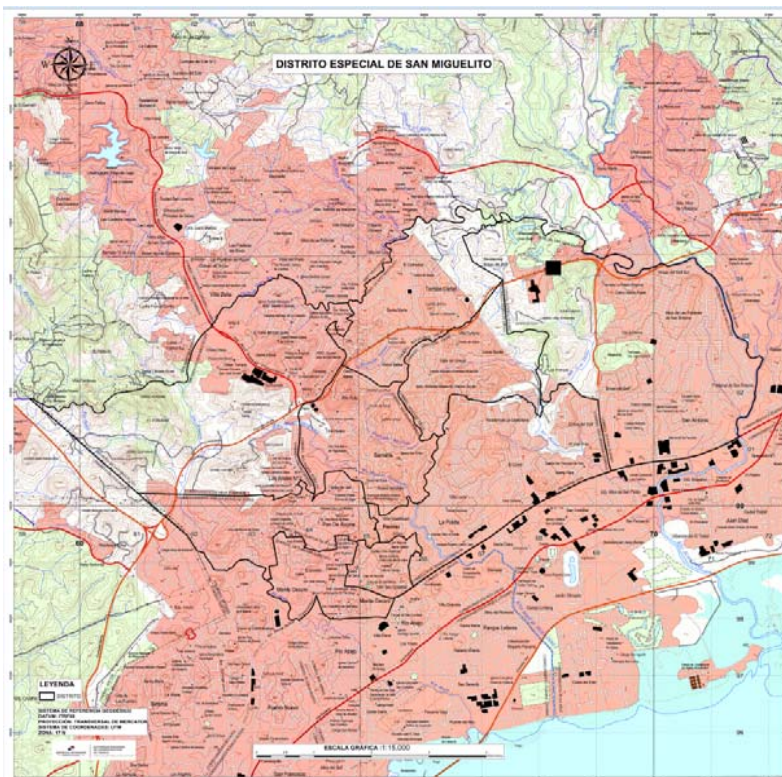
COVID-19: Strategies for a geospatial response in the Americas



Let's do it...

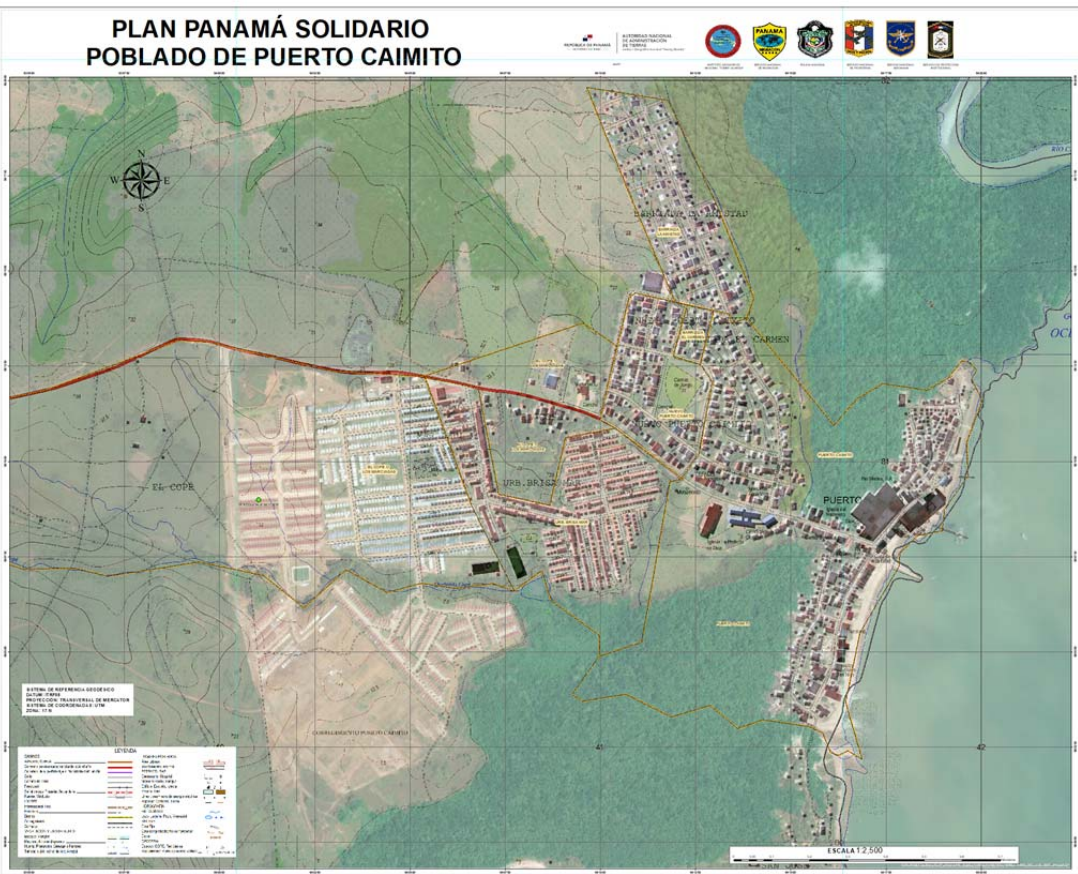


Map of the Special District of San Miguelito at scale 1:15 000 - IGNTG Product.
An impression. Worked with 4 raster images of the 1:25 000 scale maps and
the Administrative Political Limits database.

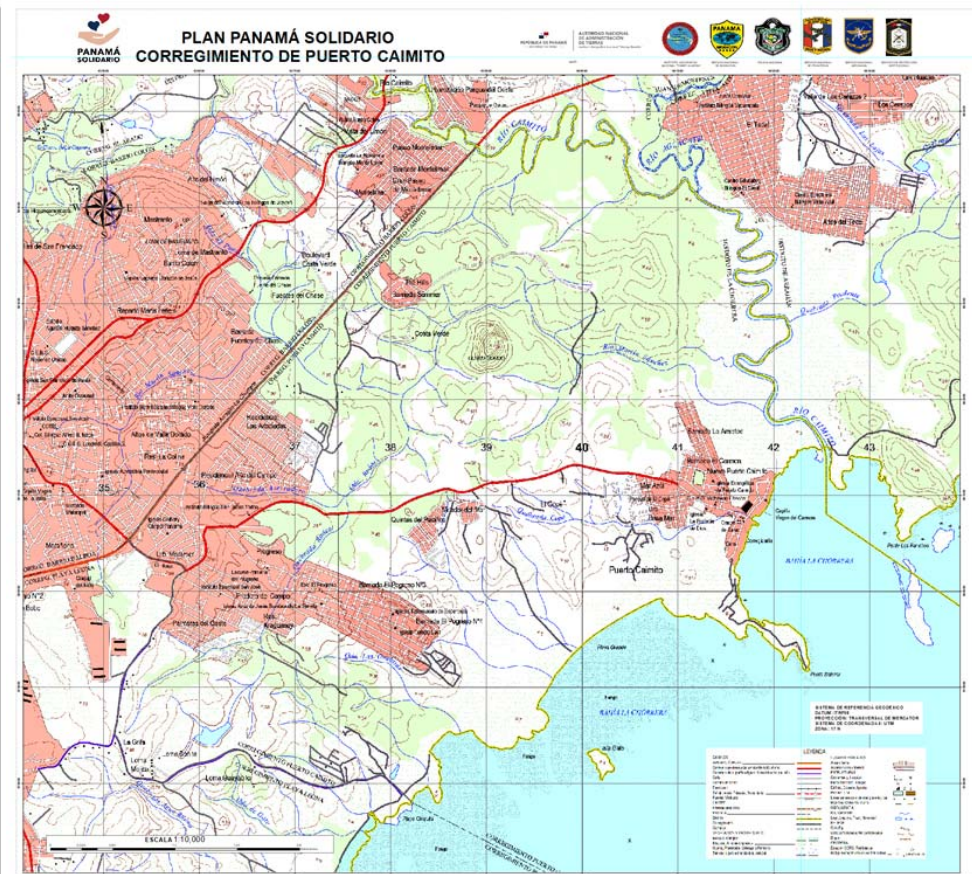


Maps for the Vice Ministry of Economy for the distribution of aid.

**PLAN PANAMÁ SOLIDARIO
POBLADO DE PUERTO CAIMITO**



**PLAN PANAMÁ SOLIDARIO
CORREGIMIENTO DE PUERTO CAIMITO**





The plan focused on health, with 6 application measures: stay at home, ROSA virtual clinic, care module, individual notification of negative cases, modular hospital, recovery phase

<http://www.minsa.gob.pa/destacado/coronavirus-covid-19>



<https://geosocial.maps.arcgis.com/apps/opstdashboard/index.html#/2c6e932c690d467b85375af52b614472>



291 proposals were received and 32 of them were prioritized, these proposals use georeferenced information as a core part of their research. With it they can develop location of projects, databases, test analysis, evaluations, among others.

Centralized place where Panamanian scientists can deposit (load) or explore research data to face the global SARS-CoV2 / COVID-19 pandemic, the National Secretariat of Science, Technology and Innovation (SENACYT), through the Platform ABC has created the COVID-19 Panama research community within the Zenodo platform.

Dataset [cvs, eg]. Publications (articles or books). Posters. Presentations. Images. Audios and videos. Software (or codes). Others.



CIENCIA ABIERTA CONTRA LA PANDEMIA

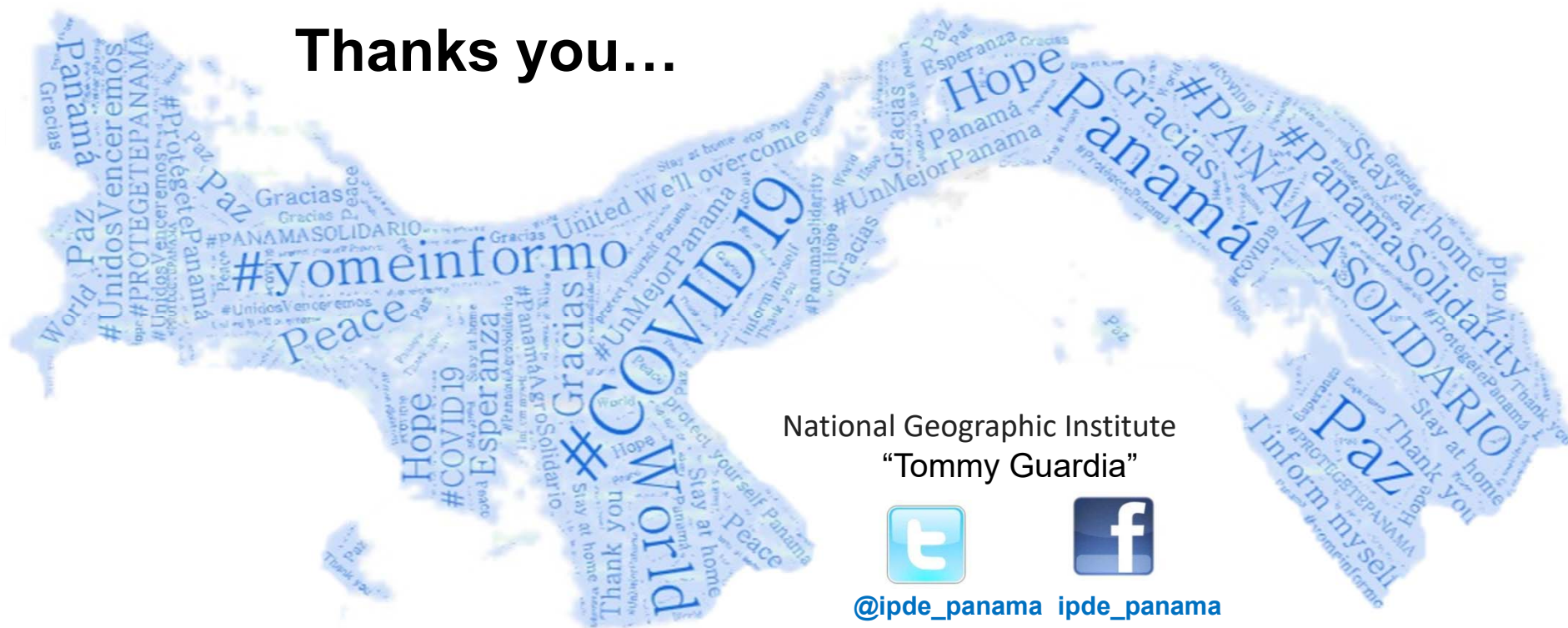
REPOSITORIO DE DATOS DE INVESTIGACIÓN PARA PANAMÁ

Para centralizar los esfuerzos de divulgación de información y cooperación, la SENACYT, a través de la Plataforma ABC, pone a disposición de los investigadores, innovadores y tecnólogos una comunidad en Zenodo para compartir todos sus datos de investigación relacionados a los hallazgos referentes a SARS-CoV-2 y COVID-19 en Panamá.

ACCESO EN:
[HTTPS://ABC.SENACYT.GOB.PA/REPOSITORIO-DE-DATOS-CIENTIFICOS-COVID-19/](https://abc.senacyt.gob.pa/repositorio-de-datos-cientificos-covid-19/)

Zenodo es uno de los repositorios de datos de investigación de acceso abierto más grande del mundo y es gestionado por la Unión Europea a través de OpenAIRE.

Thanks you...



National Geographic Institute
"Tommy Guardia"



@ipde_panama ipde_panama

<http://www.ipde.gob.pa>

Telephone: (507) 524 3313
direccionigntg@anati.gob.pa