

# The Caribbean Geoportal



Caribbean GeoPortal Data Tools Learn Map About Us

🔍 🔔 👤 Linda ▾



COVID-19 Resources for the Caribbean are now available.

[Caribbean COVID-19 Response](#)

## Why does geography matter?

Location intelligence is the ability to analyze and find spatial patterns in data, to provide powerful insights into understanding our world and communicating our needs. This is possible through a combination of local data and advanced geospatial tools, with training that's included for anyone working on geospatial challenges across the region.



Join the community now and start mapping today!

# The Caribbean GeoPortal: Tools and Content

The Caribbean GeoPortal provides full access to ArcGIS Online, providing access to tools for mapping, analytics, sharing and collaboration, and a suite of templates and field applications



Content available includes:



Admin boundaries



Land cover



Imagery



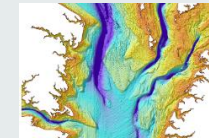
Real-time traffic



Wind & weather conditions



Demographics

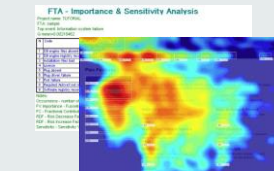


Bathymetry

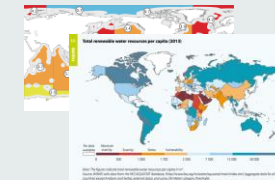


Oceans

Open Data Sources



Community Data (Govs-NGOs-AID Orgs.)



Commercial Data



Caribbean GeoPortal



“

*We are deeply committed to supporting innovation in the Caribbean, helping users discover, explore, and understand the vast information available to them through the power of maps ”*

Jack Dangermond

President and Founder of Esri